



PRICED AT  
**\$685,700**

 2964 Sq Ft

 3 Beds

 3.0 Baths

 2 Car Garage

 3.0 Story

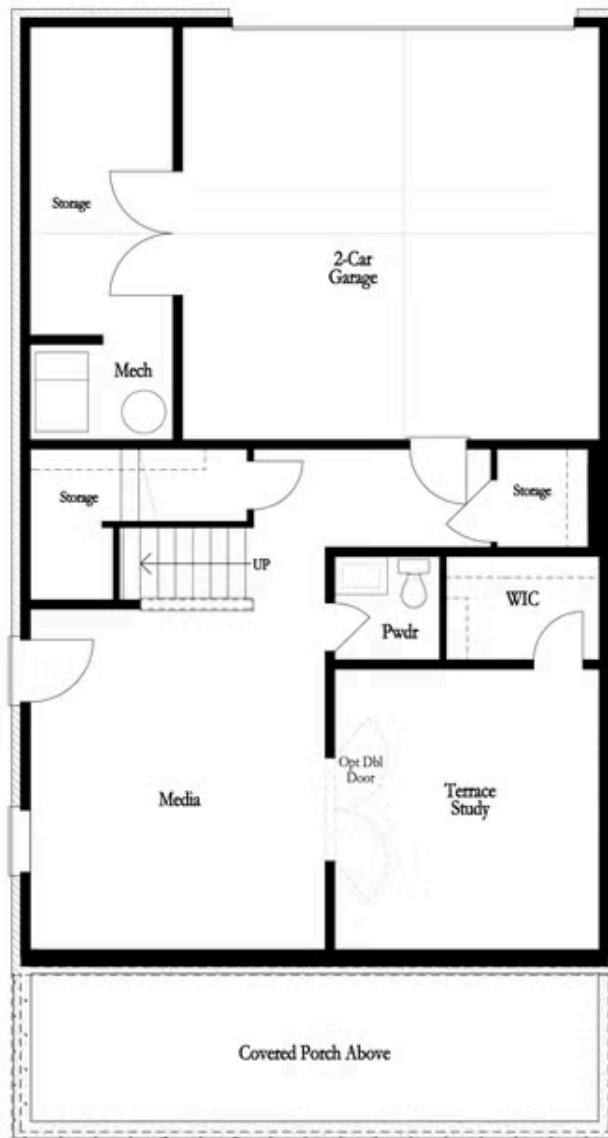
ELEVATE YOUR LIFE IN 2023! Manchester F - Beautiful white-painted classic, yet modern farmhouse. Spacious & open floorplan with high ceilings. Finished terrace level has many uses: bedroom, game room & or office. Main floor with large family & dining room. The gourmet kitchen has a super large island, quartz countertops & tons of cabinets. The 3rd floor hosts the owners suite & additional bedrooms. Owners suite features a sizable walk-in closet & spa-like bath with a double vanity. Gorgeous wide front porch & Covered side deck for outdoor entertaining. Overlooks common green space and has treed buffer outback. One mile walk to Suwanee Town Center and easy access to Suwanee Creek Trails; Best North Gwinnett school district. Community Cabana and Pool. HOA maintained lawns. Beautiful home built by The Providence Group! Estimated closing time-frame July/August 2023. Photos are for representative purposes and not of actual home.

Want to Know More  
About This Home?

CONTACT OUR COMMUNITY SALES MANAGER

NONE

Call Us @ (678) 332-7300



Basement Floor

Want to Know More  
About This Home?

CONTACT OUR COMMUNITY SALES MANAGER

NONE

Call Us @ (678) 332-7300



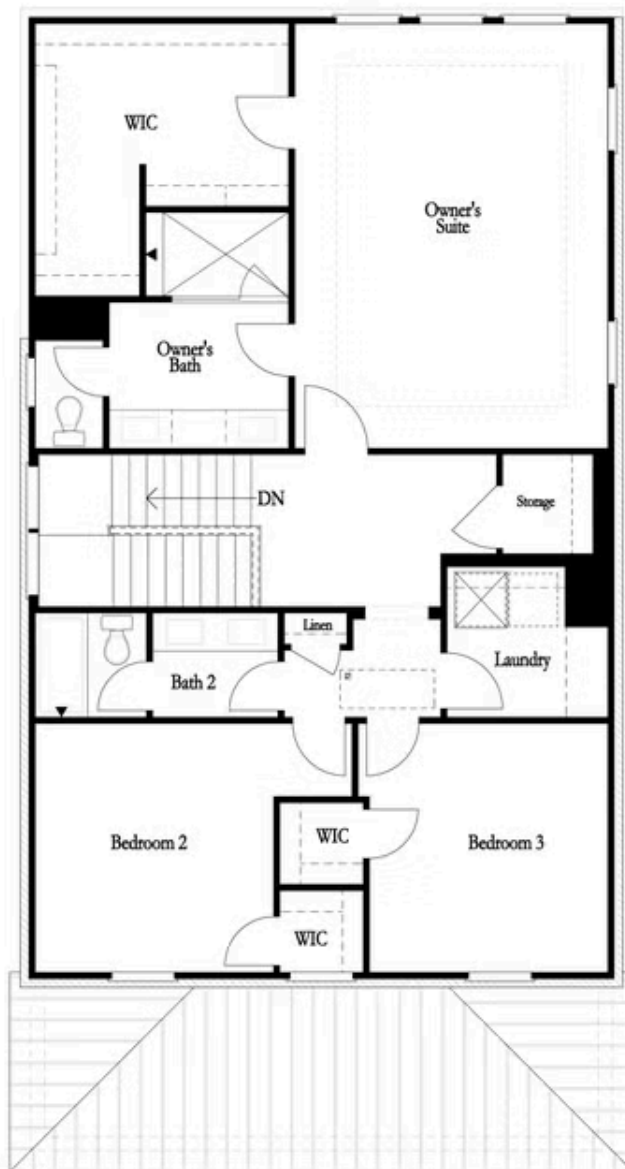
First Floor

Want to Know More  
About This Home?

CONTACT OUR COMMUNITY SALES MANAGER

NONE

Call Us @ (678) 332-7300



Second Floor

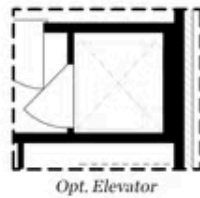
Want to Know More  
About This Home?

CONTACT OUR COMMUNITY SALES MANAGER

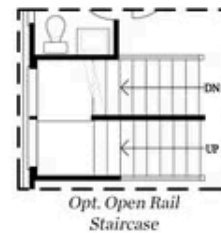
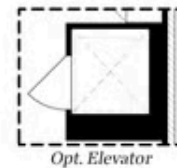
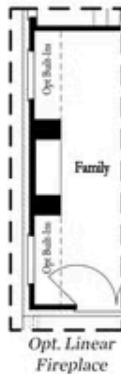
NONE

Call Us @ (678) 332-7300

Options



Basement Floor Options



First Floor Options

Want to Know More  
About This Home?

CONTACT OUR COMMUNITY SALES MANAGER

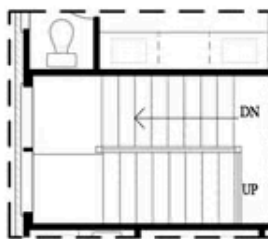
NONE

Call Us @ (678) 332-7300

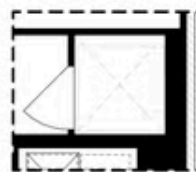
### Options



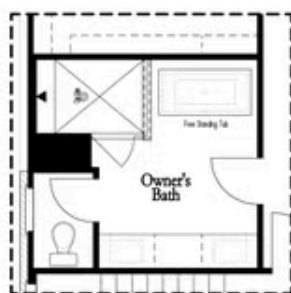
Opt. Laundry Sink



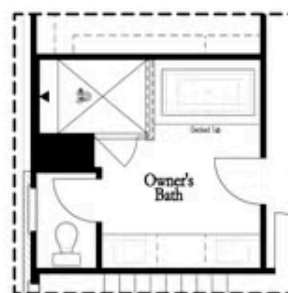
Opt. Open Rail  
Staircase



Opt. Elevator



Opt. Freestanding Tub



Opt. Decked Tub

### Second Floor Options

Want to Know More  
About This Home?

CONTACT OUR COMMUNITY SALES MANAGER

NONE

Call Us @ (678) 332-7300