



PRICED AT
\$685,700

 2964 Sq Ft

 3 Beds

 3.0 Baths

 2 Car Garage

 3.0 Story

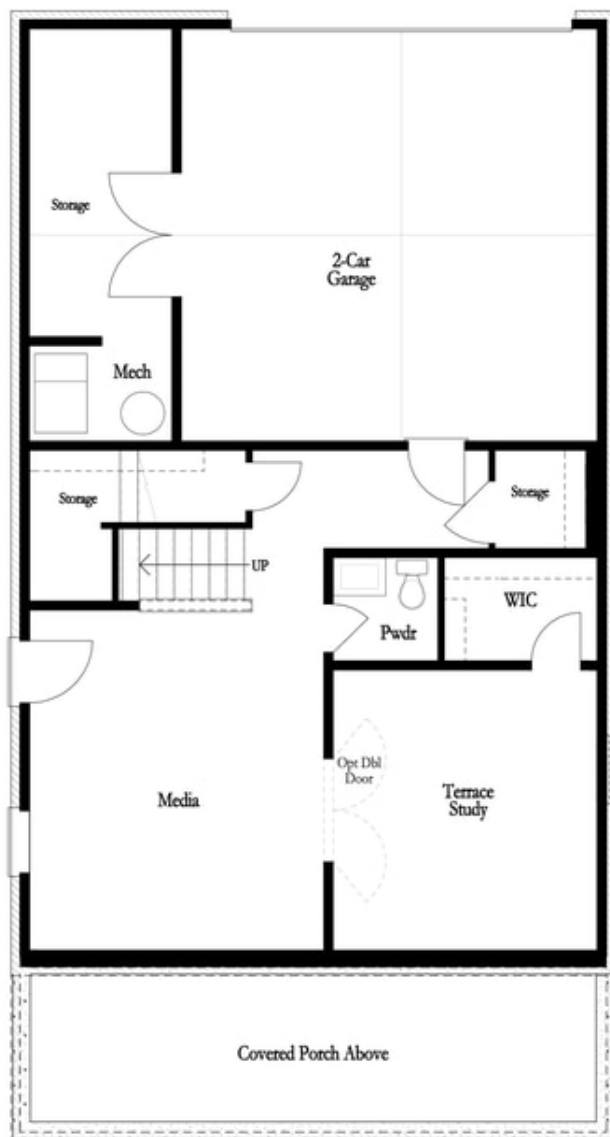
ELEVATE YOUR LIFE IN 2023! Manchester F - Beautiful white-painted classic, yet modern farmhouse. Spacious & open floorplan with high ceilings. Finished terrace level has many uses: bedroom, game room & or office. Main floor with large family & dining room. The gourmet kitchen has a super large island, quartz countertops & tons of cabinets. The 3rd floor hosts the owners suite & additional bedrooms. Owners suite features a sizable walk-in closet & spa-like bath with a double vanity. Gorgeous wide front porch & Covered side deck for outdoor entertaining. Overlooks common green space and has treed buffer outback. One mile walk to Suwanee Town Center and easy access to Suwanee Creek Trails; Best North Gwinnett school district. Community Cabana and Pool. HOA maintained lawns. Beautiful home built by The Providence Group! Estimated closing time-frame July/August 2023. Photos are for representative purposes and not of actual home.

**Want to Know More
About This Home?**

CONTACT OUR NEW HOME NAVIGATOR

NONE

Call Us @ (678) 332-7300



Basement Floor

Want to Know More
About This Home?

CONTACT OUR NEW HOME NAVIGATOR

NONE

Call Us @ (678) 332-7300



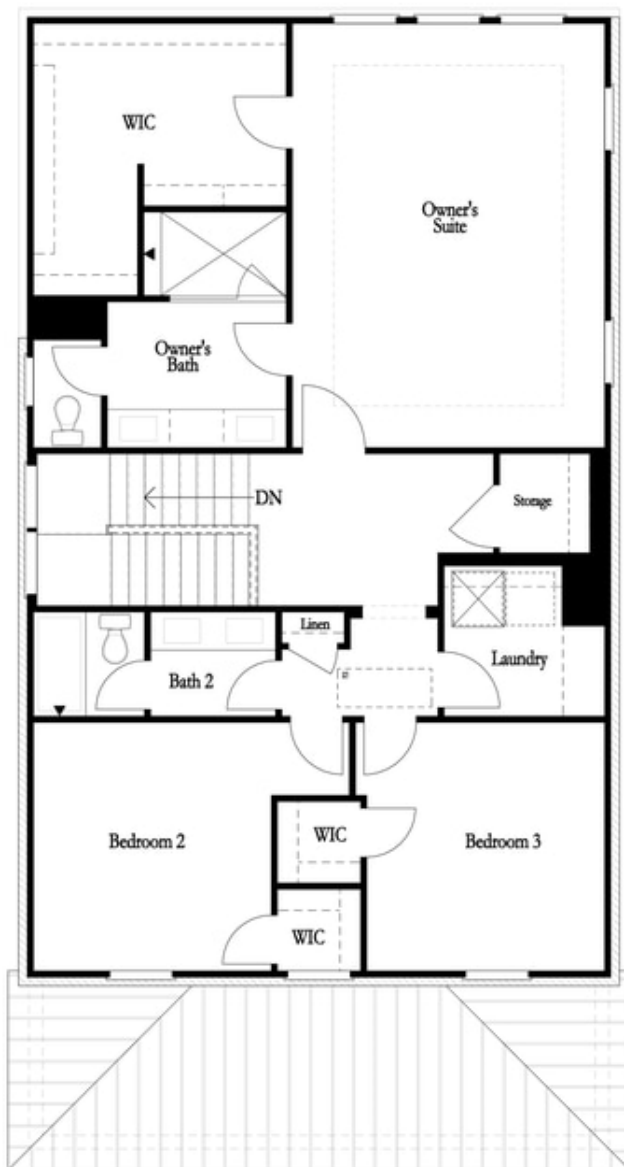
First Floor

Want to Know More
About This Home?

CONTACT OUR NEW HOME NAVIGATOR

NONE

Call Us @ (678) 332-7300



Second Floor

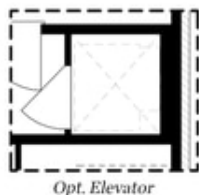
**Want to Know More
About This Home?**

CONTACT OUR NEW HOME NAVIGATOR

NONE

Call Us @ (678) 332-7300

Options

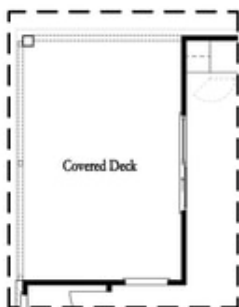


Opt. Elevator



Opt. Bedroom w/ Full Bath

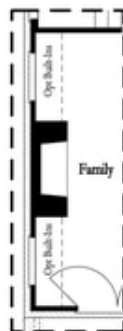
Basement Floor Options



Opt. Slider Door



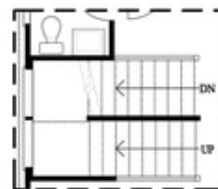
Opt. Linear
Fireplace



Opt. Fireplace w/
36" Direct Vent



Opt. Elevator



Opt. Open Rail
Staircase

First Floor Options

Want to Know More
About This Home?

CONTACT OUR NEW HOME NAVIGATOR

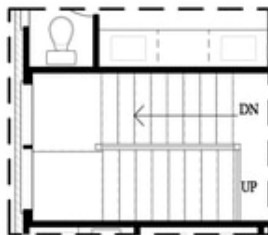
NONE

Call Us @ (678) 332-7300

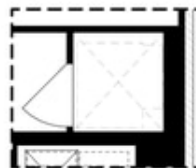
Options



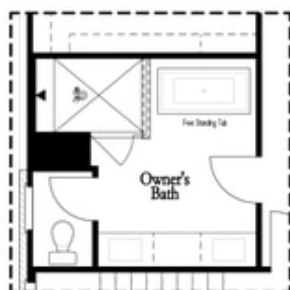
Opt. Laundry Sink



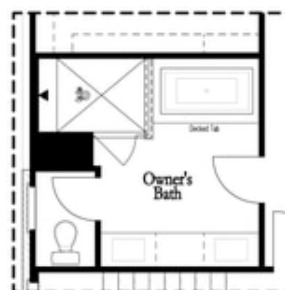
*Opt. Open Rail
Staircase*



Opt. Elevator



Opt. Freestanding Tub



Opt. Decked Tub

Second Floor Options

**Want to Know More
About This Home?**

CONTACT OUR NEW HOME NAVIGATOR

NONE

Call Us @ (678) 332-7300