



PRICED AT
\$691,610

 2964 Sq Ft

 4 Beds

 3.5 Baths

 2 Car Garage

 3.0 Story

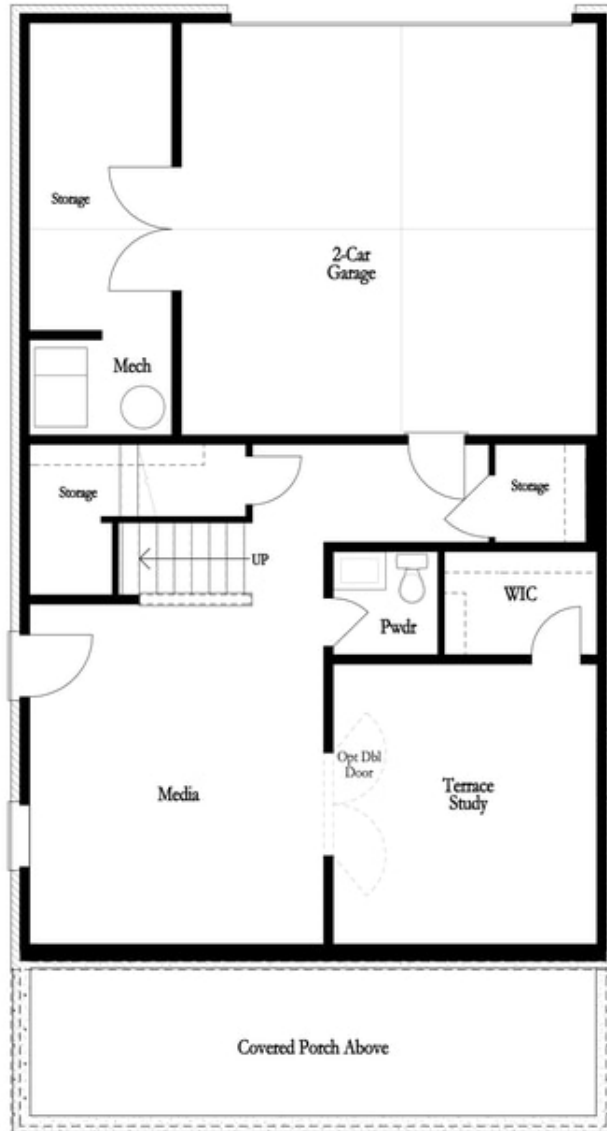
Elevate your life in 2023! Manchester E - Beautiful white-painted classic, yet modern farmhouse. One of our most sought-after home designs. Spacious & open floorplan with high ceilings and lots of natural light. Finished terrace level has many uses: bedroom, game room & or office. Main floor with large family & dining room. The gourmet kitchen has white cabinets, a super large island, quartz countertops & tons of cabinets. The 3rd floor hosts the owners suite & additional bedrooms along with conveniently located laundry room. Owner's suite features a large walk-in closet & spa-like bath with a double vanity. Gorgeous wide front porch & Covered side deck for outdoor entertaining. Ready for move-in end of May. Photos are not of actual home. 1 mile walk to Suwanee Town Center and easy access to Suwanee Creek Trails; Best North Gwinnett school district. Community Cabana and Pool with firepit area. HOA maintained lawns. Beautiful home built by The Providence Group! \$5000 Closing cost with approved lender.

**Want to Know More
About This Home?**

CONTACT OUR COMMUNITY SALES MANAGER

NONE

Call Us @ (678) 332-7300



Basement Floor

Want to Know More
About This Home?

CONTACT OUR COMMUNITY SALES MANAGER

NONE

Call Us @ (678) 332-7300



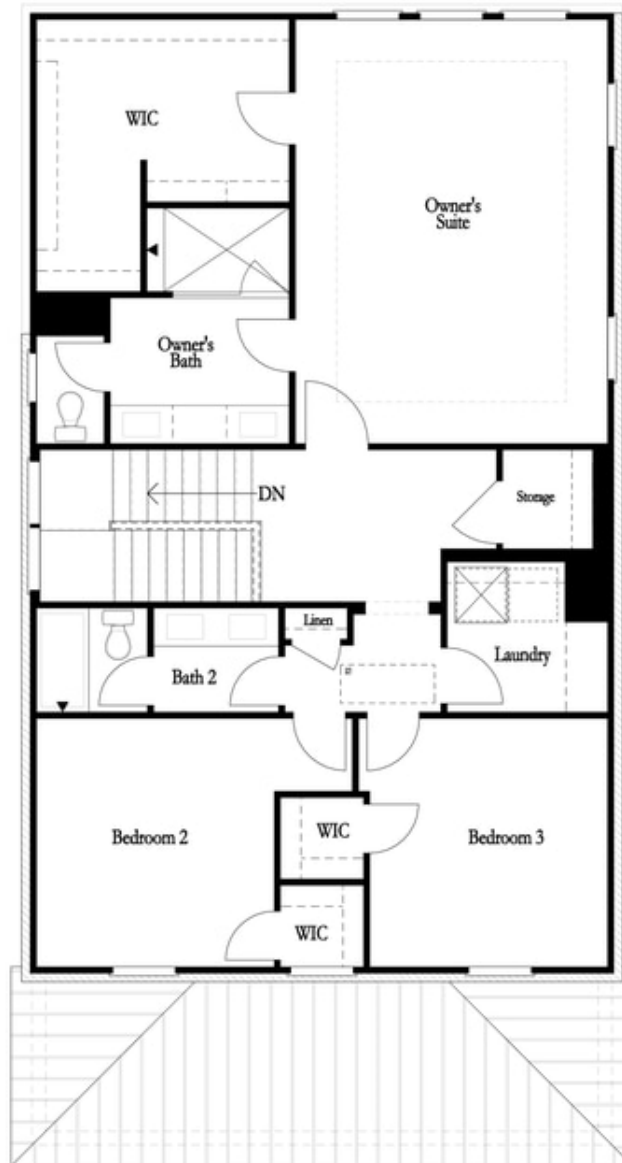
First Floor

Want to Know More
About This Home?

CONTACT OUR COMMUNITY SALES MANAGER

NONE

Call Us @ (678) 332-7300



Second Floor

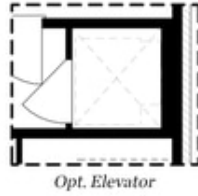
Want to Know More
About This Home?

CONTACT OUR COMMUNITY SALES MANAGER

NONE

Call Us @ (678) 332-7300

Options

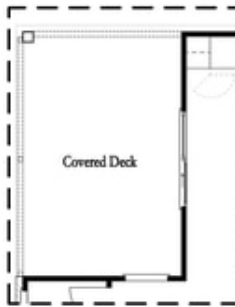


Opt. Elevator



Opt. Bedroom w/ Full Bath

Basement Floor Options



Opt. Slider Door



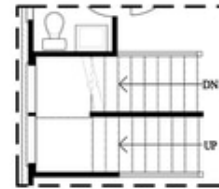
*Opt. Linear
 Fireplace*



*Opt. Fireplace w/
 36" Direct Vent*



Opt. Elevator



*Opt. Open Rail
 Staircase*

First Floor Options

**Want to Know More
 About This Home?**

CONTACT OUR COMMUNITY SALES MANAGER

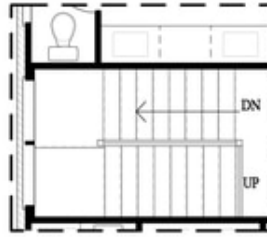
NONE

Call Us @ (678) 332-7300

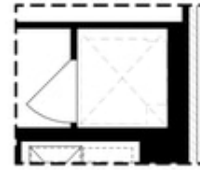
Options



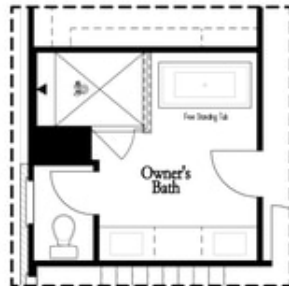
Opt. Laundry Sink



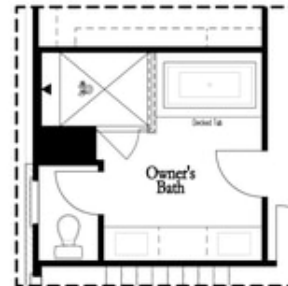
Opt. Open Rail Staircase



Opt. Elevator



Opt. Freestanding Tub



Opt. Decked Tub

Second Floor Options

**Want to Know More
 About This Home?**

CONTACT OUR COMMUNITY SALES MANAGER

NONE

Call Us @ (678) 332-7300