



PRICED AT  
**\$633,150**

 2453 Sq Ft

 3 Beds

 2.5 Baths

 2 Car Garage

 2.0 Story

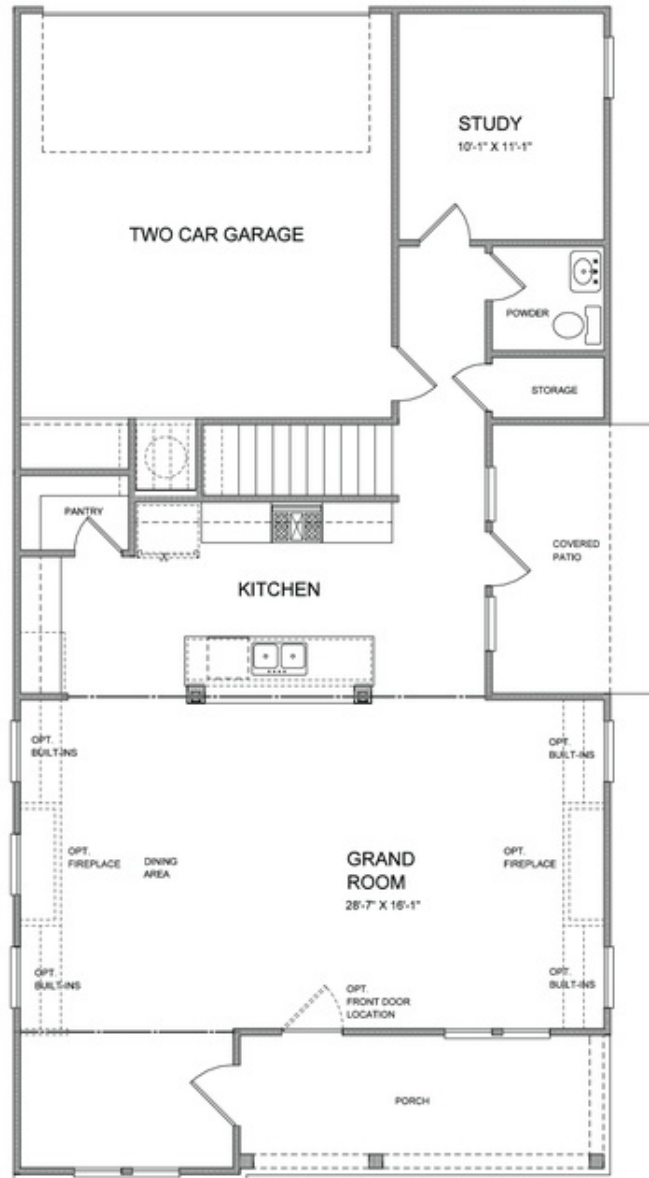
**ELEVATE YOUR LIFE IN 2023!! Owens D-** This gorgeous white painted farmhouse-style home offers luxurious living and right now, the Buyer has the ability to pick out all their personalized finishes! This beautiful home is **TO BE** built by The Providence Group and is nestled in the heart of Suwanee in the prestigious Harvest Park Community. This gourmet kitchen features plenty of storage space and **YOU CAN SELECT** your cabinets, your countertops, flooring etc. Options for a study or 4th bedroom located on main floor. Upstairs, the owner's suite features large walk-in closets, double vanities. Need a 5th bedroom? Add the 3rd floor option for another bedroom and full bath! So much versatility within this floor plan!!! Welcoming front porch and a side courtyard make entertaining a breeze. The Suwanee Town Center is just a mile away containing restaurants and shops. The Suwanee Greenway and White Street Park are super close! Top North Gwinnett school district. Community cabana and pool. HOA maintained lawns. Estimated Closing Time- June/July 2023. Photos are for representative purposes and not of the actual home. The virtual tour is of the original Owens plan, The Owens II will be slightly different with larger front porch and no ...

Want to Know More  
About This Home?

CONTACT OUR COMMUNITY SALES MANAGER

**NONE**

Call Us @ (678) 332-7300

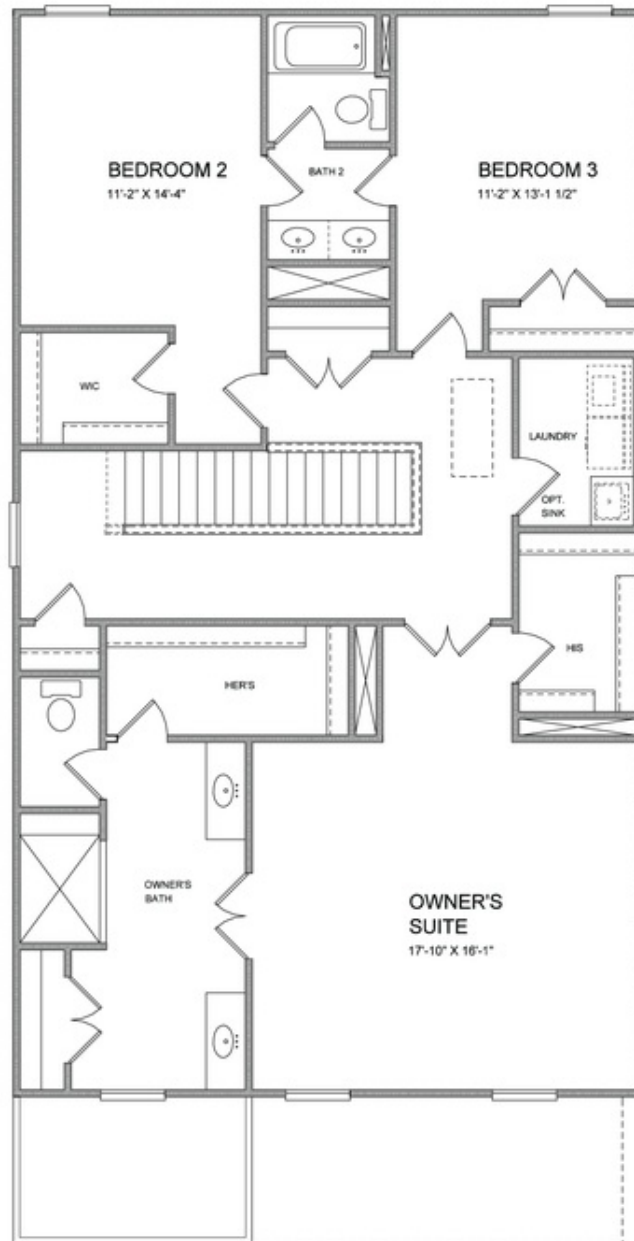


Want to Know More  
About This Home?

CONTACT OUR COMMUNITY SALES MANAGER

**NONE**

Call Us @ (678) 332-7300

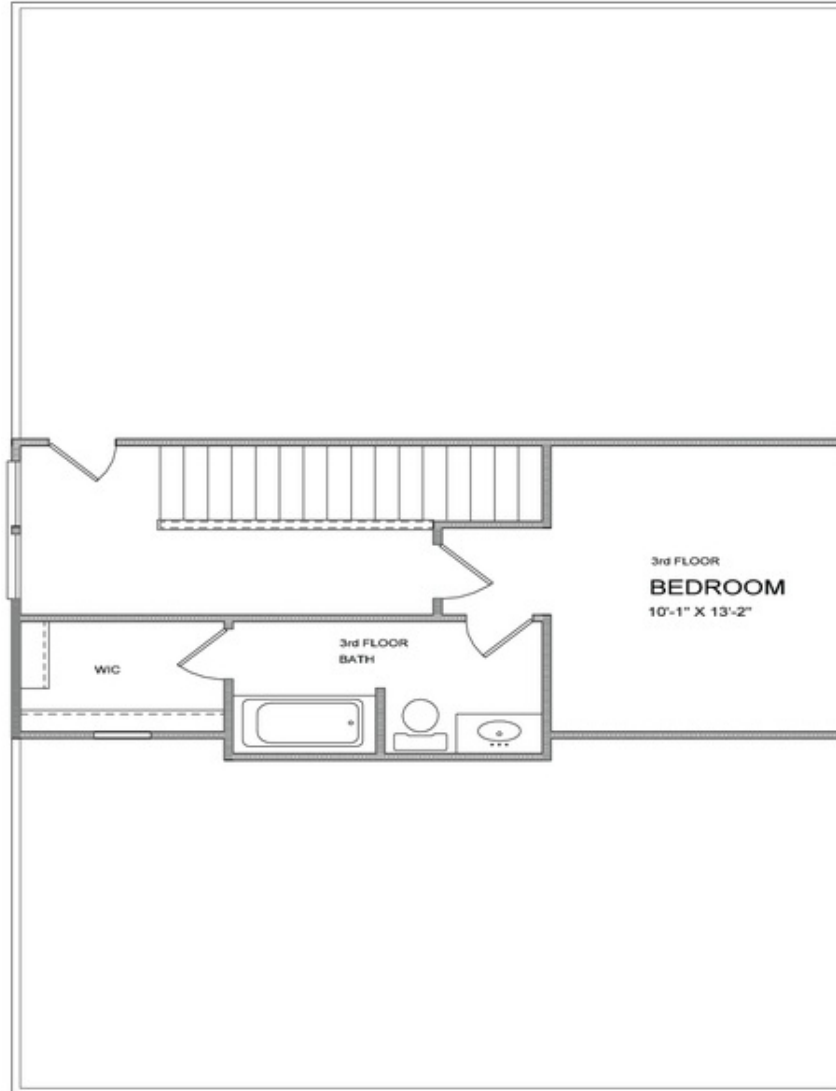


Want to Know More  
About This Home?

CONTACT OUR COMMUNITY SALES MANAGER

**NONE**

Call Us @ (678) 332-7300



Want to Know More  
About This Home?

CONTACT OUR COMMUNITY SALES MANAGER

**NONE**

Call Us @ (678) 332-7300



OPTION  
 WHEN EXTERIOR STORAGE SHED



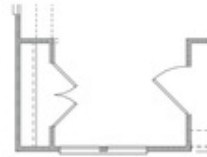
OPTION  
 WHEN EXTERIOR STORAGE and  
 INTERIOR CLOSET



OPTION  
 WHEN BEDROOM 4 and BATH 3



OPTION  
 WHEN 9' SLIDING GLASS DOOR



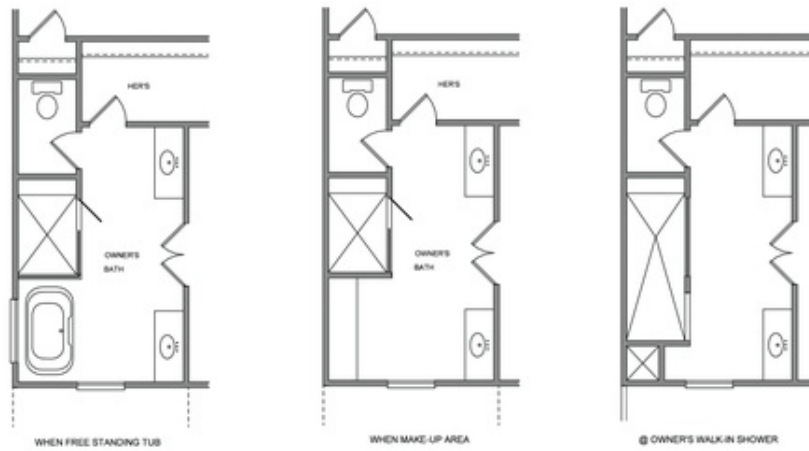
OPTION  
 WHEN COAT CLOSET

Want to Know More  
 About This Home?

CONTACT OUR COMMUNITY SALES MANAGER

**NONE**

Call Us @ (678) 332-7300



Want to Know More  
About This Home?

CONTACT OUR COMMUNITY SALES MANAGER

**NONE**

Call Us @ (678) 332-7300