



PRICED AT
\$712,510

 2968 Sq Ft

 4 Beds

 3.5 Baths

 2 Car Garage

 3.0 Story

This is an amazing floorplan, the Sterling K located in the sought after community of Harvest Park nestled in Suwanee, Georgia. This white modern farmhouse is a 4 bedroom, 3.5 bath home. The terrace level room has many uses, maybe you need it as a 4th bedroom with private bath or also serves as a great location for a home office. The home will boast our upgraded windows, a free-standing tub, fireplace and we've already added the coffered ceilings in the dining room. So many extras already! The main living area is open concept and flows easily from one space to another. There are balconies to enjoy the view of the White Street Park located in the front of this breathtaking community. Are you looking for a great location? Harvest Park is located one mile from the Suwanee Towne Center where you will find several dining selections, retail shops, the farmers market and festivals year-round. The Suwanee Greenway, with miles of bike and walking trails is just around the corner. Highly sought after Gwinnett County schools round out the perfect place to call home. HOA maintained lawns for extra Elevated Lifestyle. This home is currently under construction. Ready for move ...

**Want to Know More
About This Home?**

CONTACT OUR COMMUNITY SALES MANAGER

NONE

Call Us @ (678) 332-7300

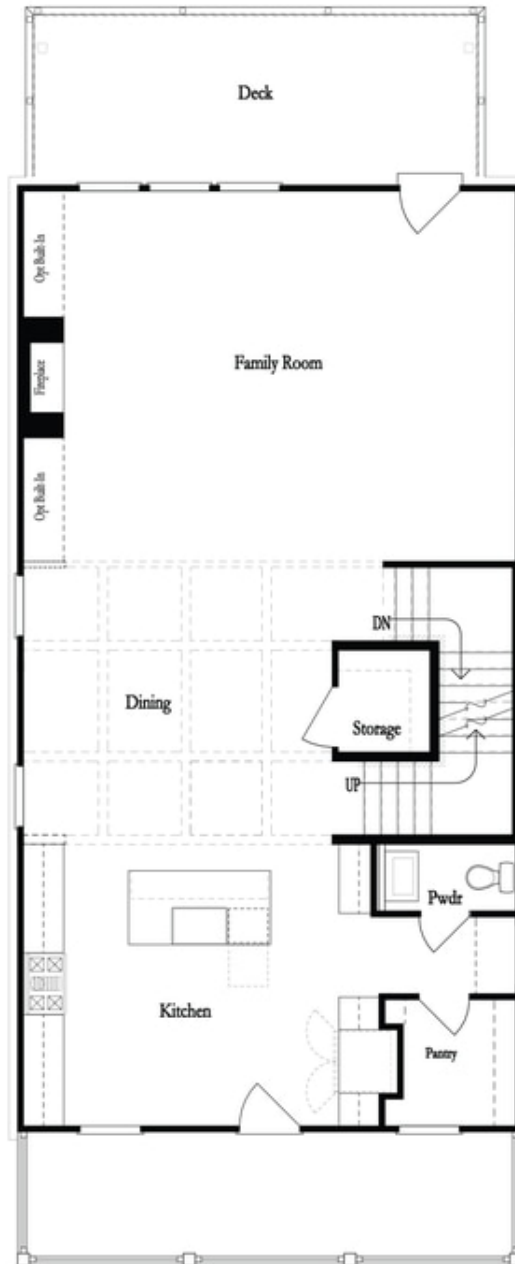


**Want to Know More
About This Home?**

CONTACT OUR COMMUNITY SALES MANAGER

NONE

Call Us @ (678) 332-7300

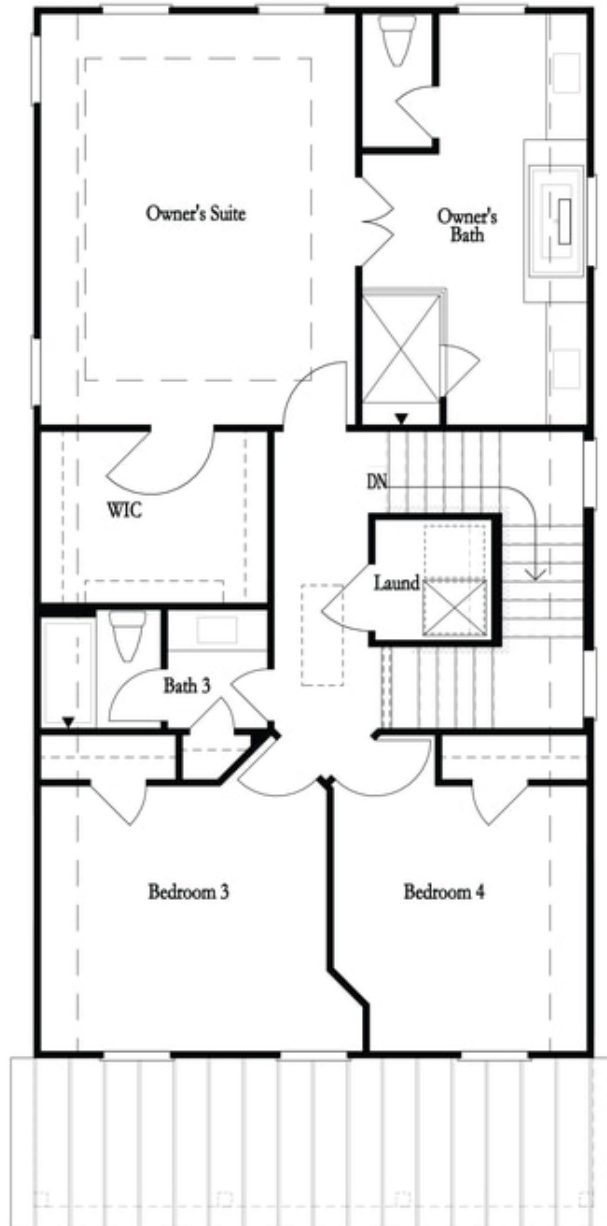


**Want to Know More
About This Home?**

CONTACT OUR COMMUNITY SALES MANAGER

NONE

Call Us @ (678) 332-7300



**Want to Know More
About This Home?**

CONTACT OUR COMMUNITY SALES MANAGER

NONE

Call Us @ (678) 332-7300