



PRICED AT  
**\$679,400**

 2968 Sq Ft

 4 Beds

 3.5 Baths

 2 Car Garage

 3.0 Story

Beautiful white-painted classic, yet modern farmhouse: The Sterling J - Spacious & open floorplan with high ceilings. Finished terrace level has many uses: bedroom, game room & or office - also has a full bath! The main floor features a large family room with fireplace and a spacious dining room that is open to the gourmet kitchen. Amazing designer finishes in the kitchen including a large island, quartz countertops, tiled backsplash, tons of cabinets & a large walk in pantry. The 3rd floor hosts the owners suite & additional bedrooms. The owners suite offers a sizable walk-in closet & spa-like bath with free-standing tub, separate tiled shower and His/Hers vanities. The 2 secondary bedrooms have a shared bath. Gorgeous wide front porch and large rear deck are perfect for outdoor entertaining. Close to beautiful community park great for meeting with friends/neighbors while walking the dog on the trails. One mile walk to Suwanee Town Center and easy access to Suwanee Creek Trails; Best North Gwinnett school district. Community Cabana and Pool. HOA maintained lawns. Beautiful home built by The Providence Group! Estimated closing time-frame September/October 2023. Photos are for representative purposes and not of actual home.

**Want to Know More  
About This Home?**

CONTACT OUR NEW HOME NAVIGATOR

**NONE**

Call Us @ (678) 332-7300

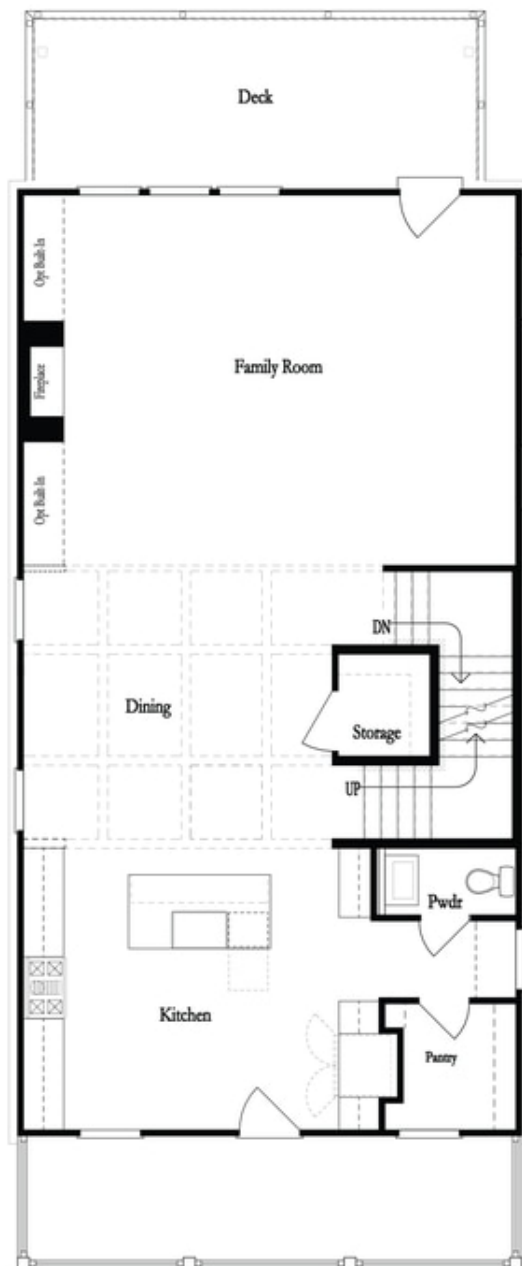


Want to Know More  
About This Home?

CONTACT OUR NEW HOME NAVIGATOR

**NONE**

Call Us @ (678) 332-7300

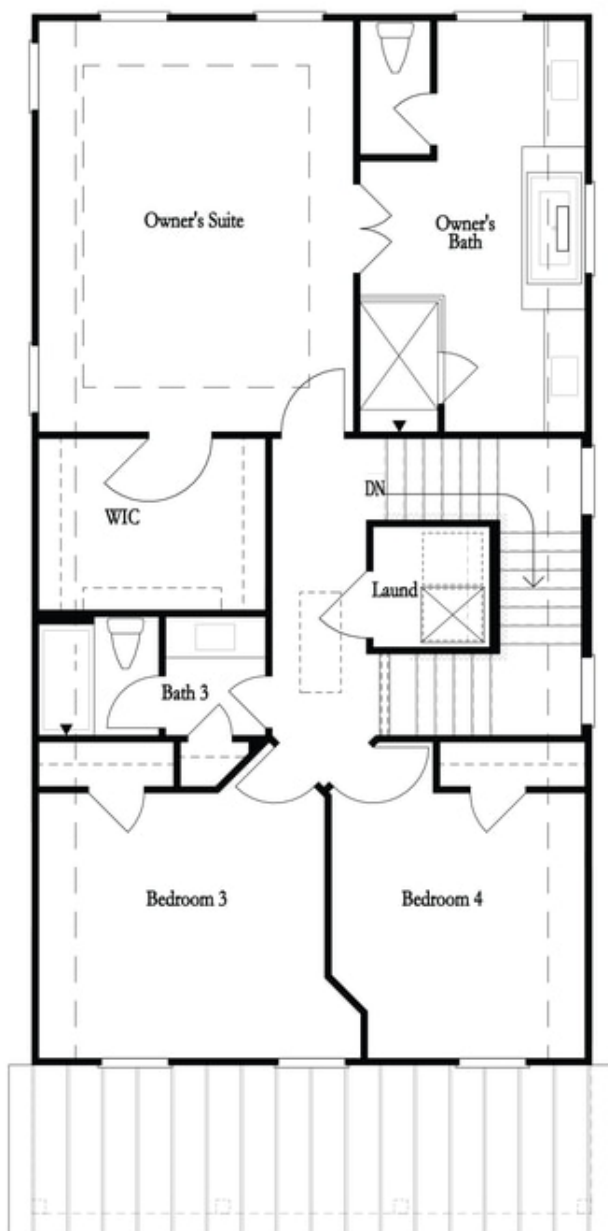


**Want to Know More  
About This Home?**

CONTACT OUR NEW HOME NAVIGATOR

**NONE**

Call Us @ (678) 332-7300



**Want to Know More  
About This Home?**

CONTACT OUR NEW HOME NAVIGATOR

**NONE**

Call Us @ (678) 332-7300