



PRICED AT  
**\$515,850**

 2186 Sq Ft

 3 Beds

 3.5 Baths

 2 Car Garage

 3.0 Story

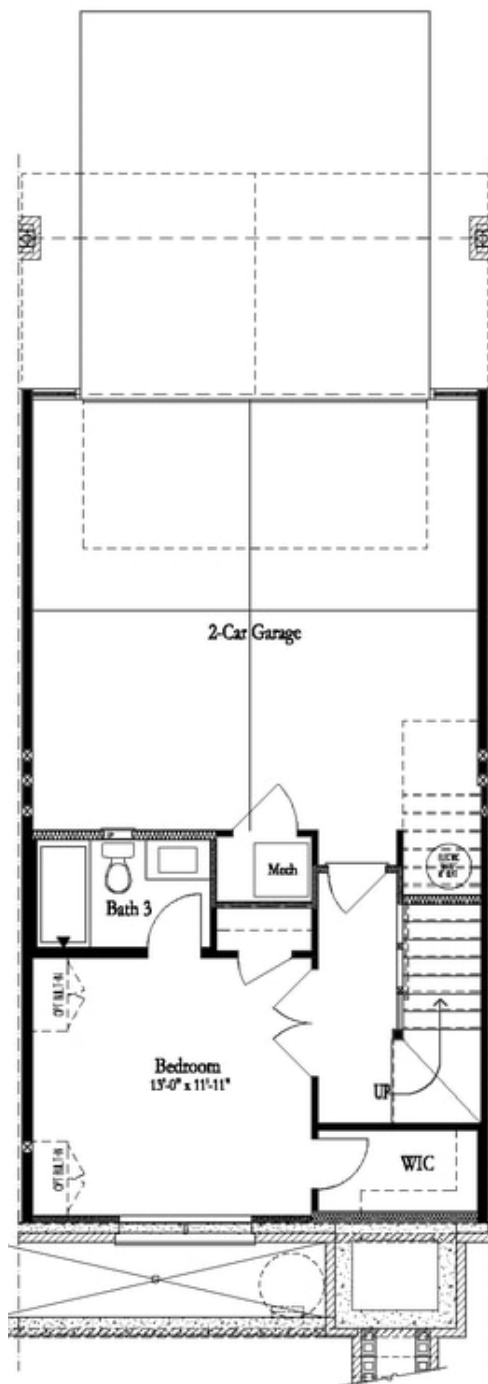
The Graham is thoughtfully planned for today's lifestyle. Beautiful modern farmhouse style townhome offers luxurious living with details every buyer desires. The main level offers a Sun-drenched open plan with the addition of a sunroom. Impressive designer kitchen outfitted with beautiful cabinets, oversized island with plenty of seating & quartz counters. The Family room has a cozy fireplace for chilly evenings. Enjoy outdoor meals on the main level deck. Relax & unwind on the upper level which features 2 bedrooms including the owners suite with luxurious en suite bath with dual vanities, large shower & spacious walk-in closet. Terrace level entry has convenient office or 3rd bedroom with full bath. Neutral paint colors throughout paired with crisp white trim &. Expertly executed, this designer residence has enviable details on all 3 levels. Enjoy the ease and convenience of luxury living within walking distance to Suwanee Town Center, walking trails and Parks. Swim community with large beautiful pool. PHOTOS ARE NOT OF ACTUAL HOME. Estimated move-in November/December 2023. "Elevate your life in 2023 with a new home by The Providence Group and \$5,000 towards closing costs when using one of Seller's preferred lenders!." Harvest Park is 1 mile to Suwanee Town ...

**Want to Know More  
About This Home?**

CONTACT OUR NEW HOME NAVIGATOR

**NONE**

Call Us @ (678) 332-7300

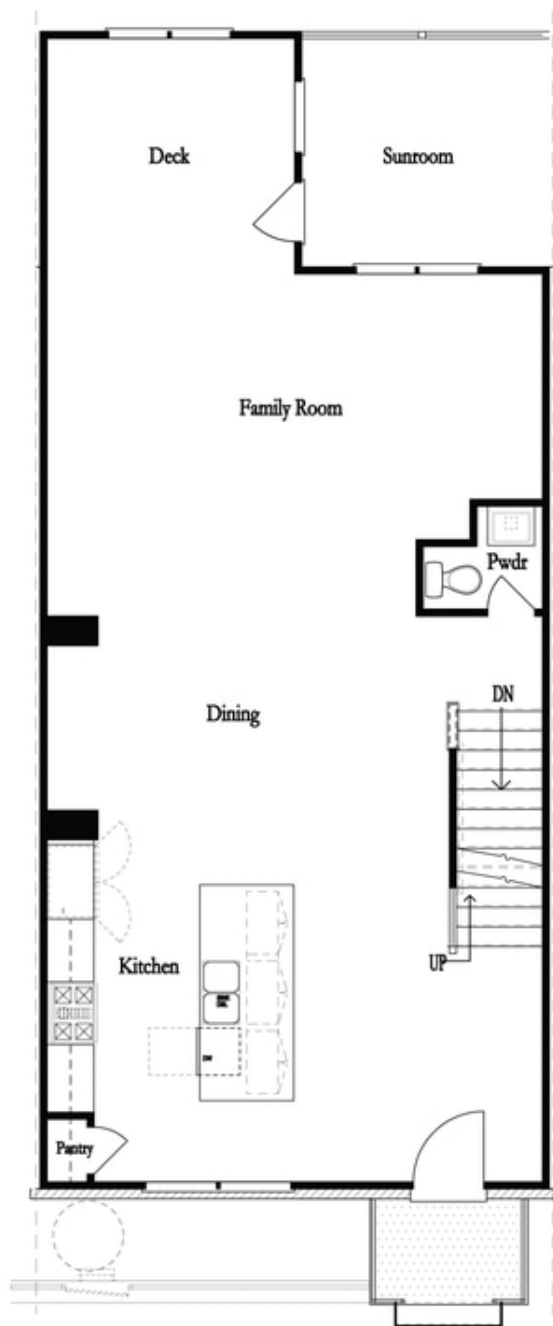


Want to Know More  
About This Home?

CONTACT OUR NEW HOME NAVIGATOR

**NONE**

Call Us @ (678) 332-7300

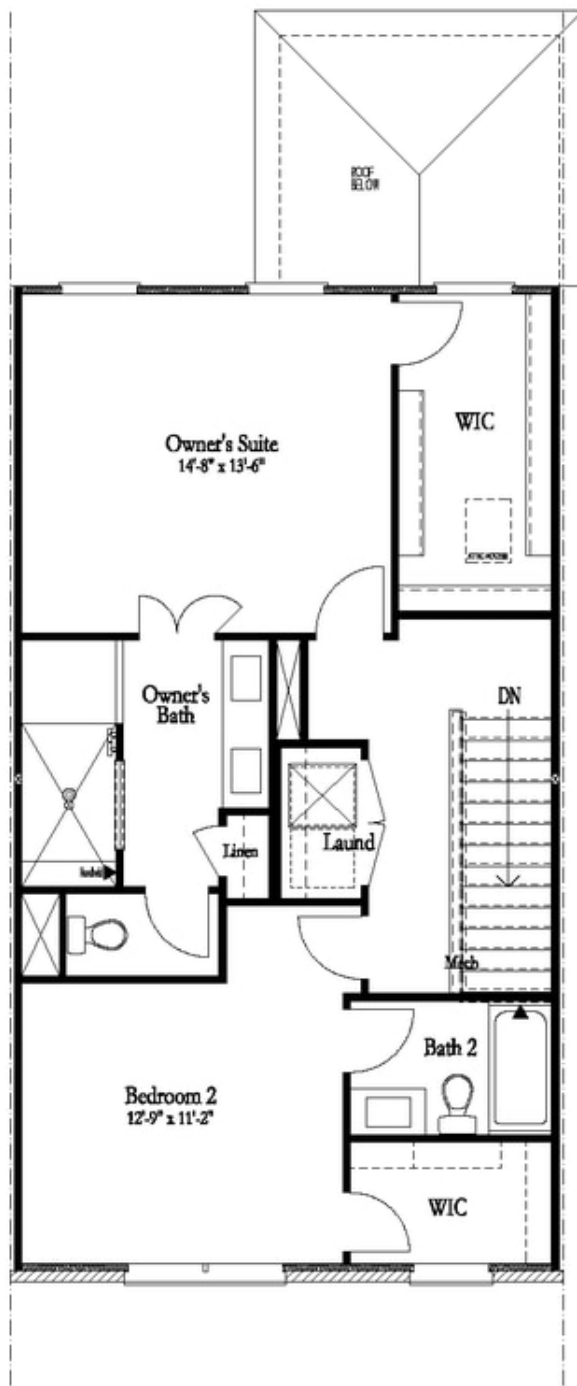


Want to Know More  
About This Home?

CONTACT OUR NEW HOME NAVIGATOR

**NONE**

Call Us @ (678) 332-7300



Want to Know More  
About This Home?

CONTACT OUR NEW HOME NAVIGATOR

**NONE**

Call Us @ (678) 332-7300