






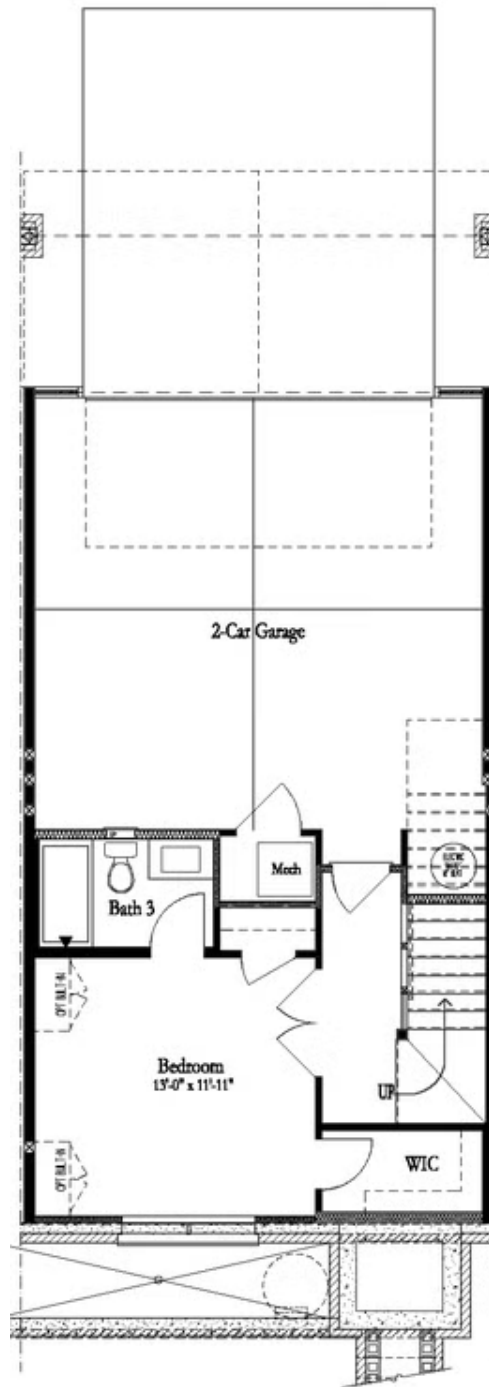
PRICED AT
\$511,850

-  2186 Sq Ft
-  3 Beds
-  3.5 Baths
-  2 Car Garage
-  3.0 Story

Stylish farmhouse townhome in the most ideal Suwanee location next to parks, restaurants, walking trails and convenient to major roadways. Luxurious living with beautiful designer details. The main level offers a ton of natural lighting. This open floorplan features a gorgeous kitchen with beautiful cabinets, oversized island with plenty of seating, stainless appliances & quartz countertops. Views from the kitchen to the dining and family room. Cozy up to the family room fireplace on cooler evenings. The sunroom allows for easy access to the main level deck. Lower level is perfect for another bedroom, media room, home gym or home office with full bath. On the upper floor, you find 2 bedrooms for relaxing at the end of a long day. The owner suite has a luxurious spa-like bath with dual vanities and large shower and spacious walk-in closet. Neutral paint colors throughout. Expertly executed, this designer residence has enviable details on all 3 levels. Thoughtfully planned for today's lifestyle, enjoy the ease and convenience of luxury living within walking distance to Suwanee Town Center, walking trails and Parks. Swim community with large beautiful pool. Ample parking throughout this amazing community. PHOTOS ARE NOT OF ACTUAL HOME. Ready in November/December ...

**Want to Know More
About This Home?**

CONTACT OUR COMMUNITY SALES MANAGER
NONE
Call Us @ (678) 332-7300

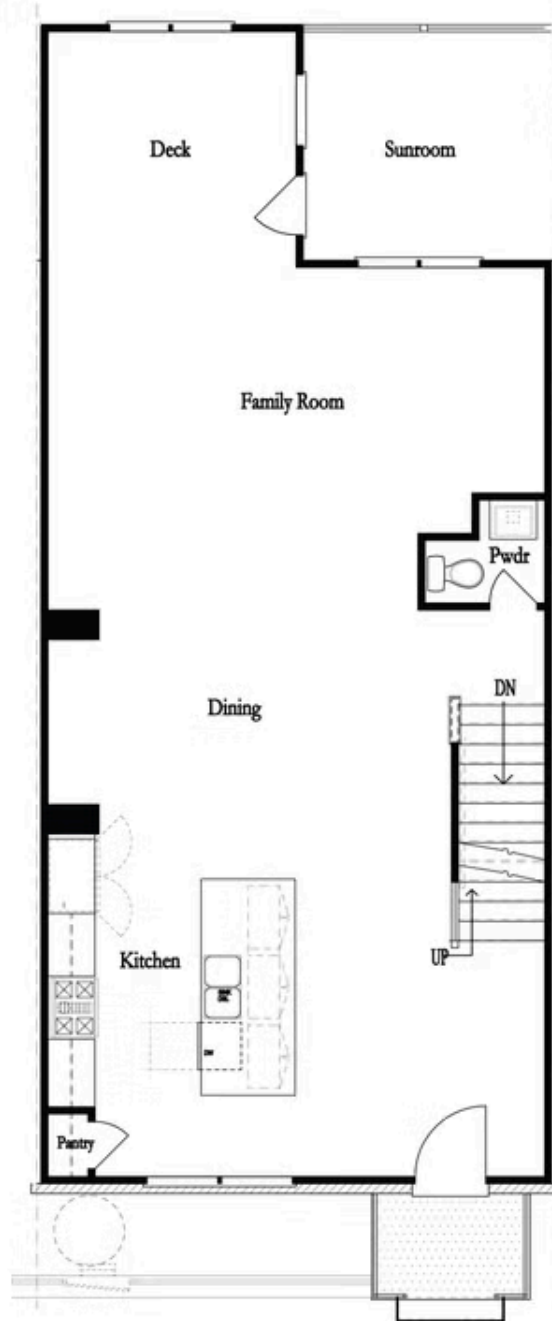


Want to Know More
About This Home?

CONTACT OUR COMMUNITY SALES MANAGER

NONE

Call Us @ (678) 332-7300

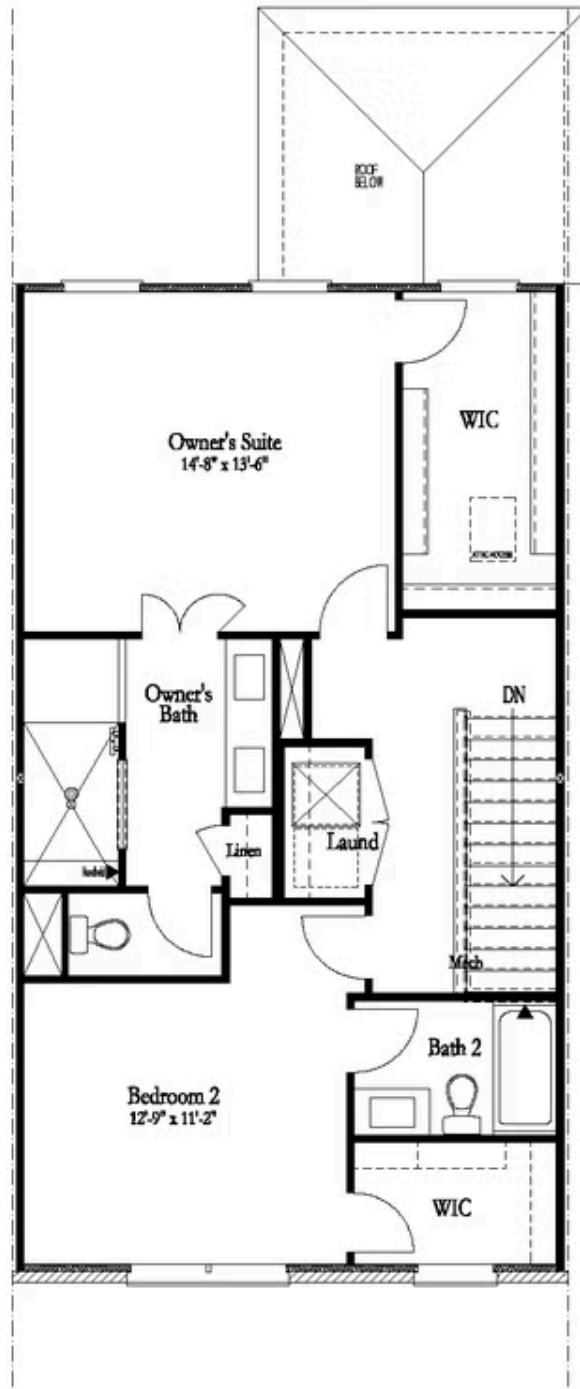


Want to Know More
About This Home?

CONTACT OUR COMMUNITY SALES MANAGER

NONE

Call Us @ (678) 332-7300



Want to Know More
About This Home?

CONTACT OUR COMMUNITY SALES MANAGER

NONE

Call Us @ (678) 332-7300