



PRICED AT  
**\$518,350**

 2186 Sq Ft

 3 Beds

 3.5 Baths

 2 Car Garage

 3.0 Story

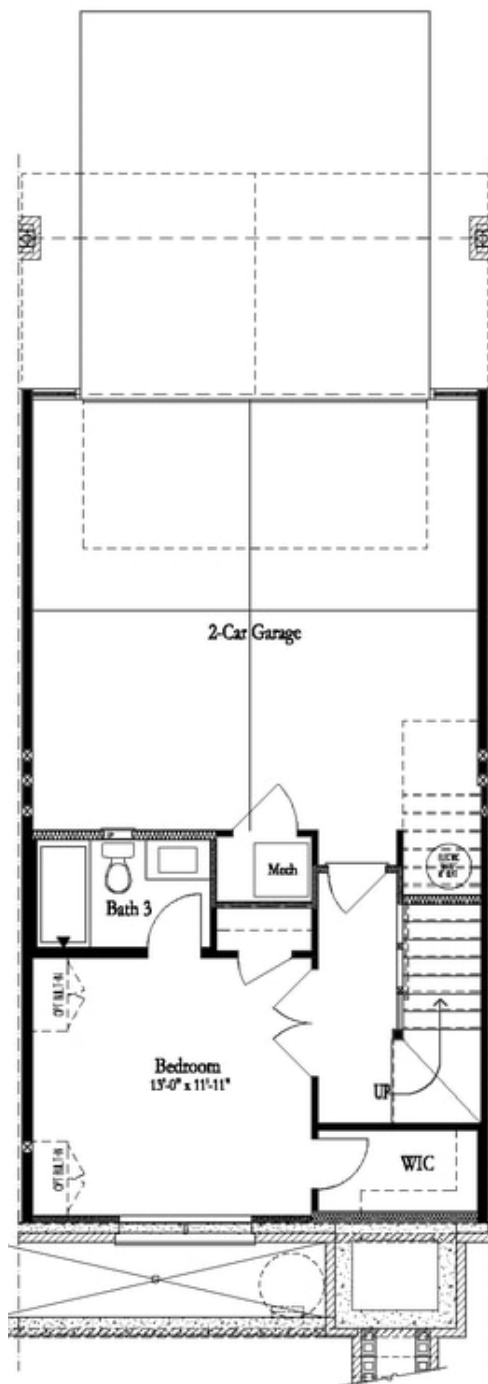
Beautiful townhome by The Providence Group. Worried about spending thousands in upgrades? Not here! Sun-drenched main level's open plan has impressive designer kitchen outfitted with beautiful 42" cabinets, stainless steel appliances including range hood, oversized island with plenty of seating & quartz counters overlooking spacious family room with gorgeous fireplace. Hard surface floors throughout main living area. Enjoy easy access from the sunroom to the main level deck perfect for outdoor meals. Relax and unwind on the upper level which features 2 bedrooms including the owner suite with luxurious en suite bath with dual vanities, large shower and spacious walk-in closet. Terrace level entry has convenient office or 3rd bedroom with full bath. Neutral paint colors throughout paired with crisp white trim & finishes every buyer craves. Expertly executed, this designer residence has enviable details on all 3 levels. Thoughtfully planned for today's lifestyle, enjoy the ease and convenience of luxury living within walking distance to Suwanee Town Center, walking trails and Parks. Swim community with large beautiful pool. **PHOTOS ARE NOT OF ACTUAL HOME.** Estimated move-in November/December 2023! "Elevate your life in 2023 with a new home by The Providence Group and \$5,000 towards closing costs when using one ...

**Want to Know More  
About This Home?**

CONTACT OUR NEW HOME NAVIGATOR

**NONE**

Call Us @ (678) 332-7300

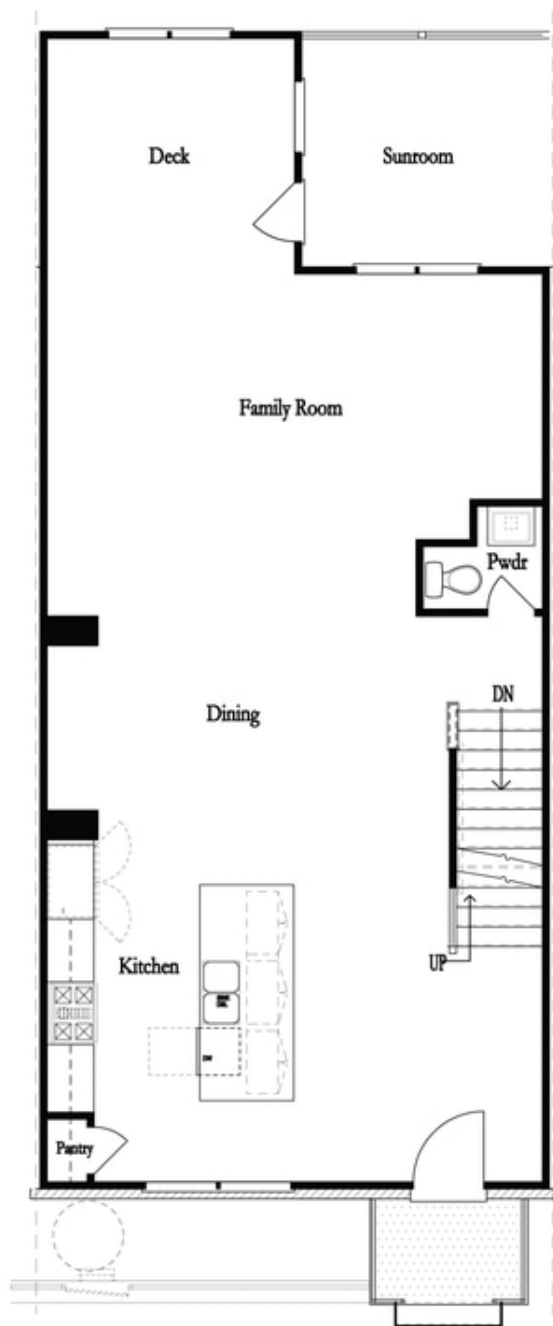


Want to Know More  
About This Home?

CONTACT OUR NEW HOME NAVIGATOR

**NONE**

Call Us @ (678) 332-7300

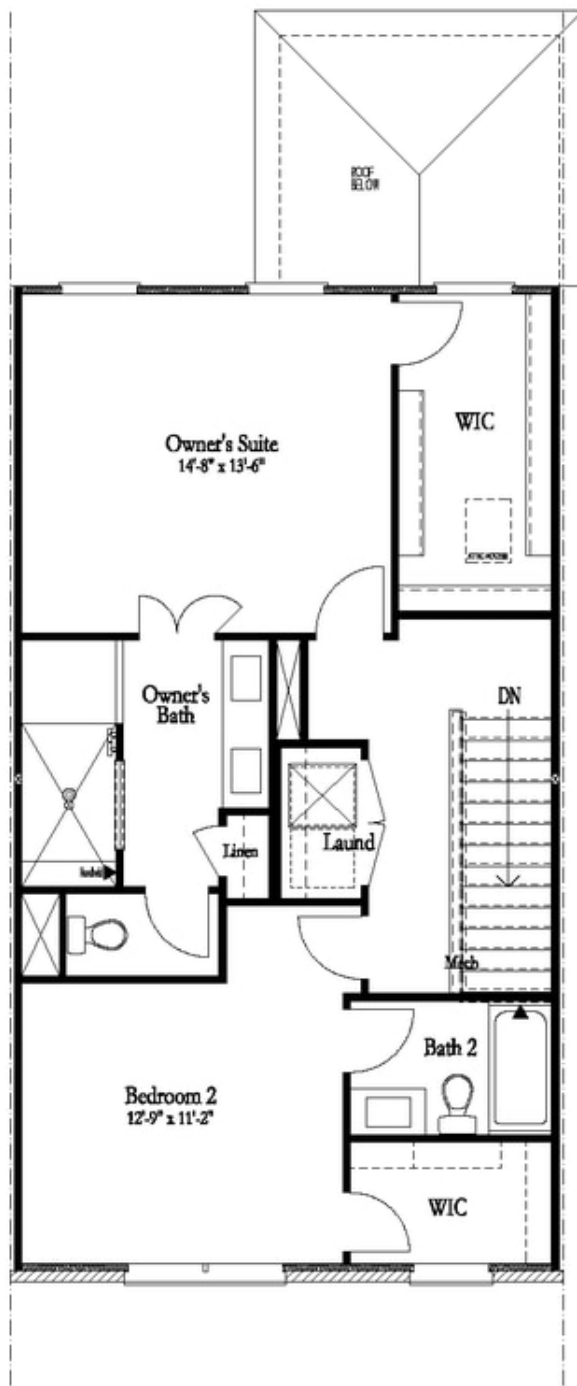


Want to Know More  
About This Home?

CONTACT OUR NEW HOME NAVIGATOR

**NONE**

Call Us @ (678) 332-7300



Want to Know More  
About This Home?

CONTACT OUR NEW HOME NAVIGATOR

**NONE**

Call Us @ (678) 332-7300