



PRICED AT
\$542,350

 2186 Sq Ft

 3 Beds

 3.5 Baths

 2 Car Garage

 3.0 Story

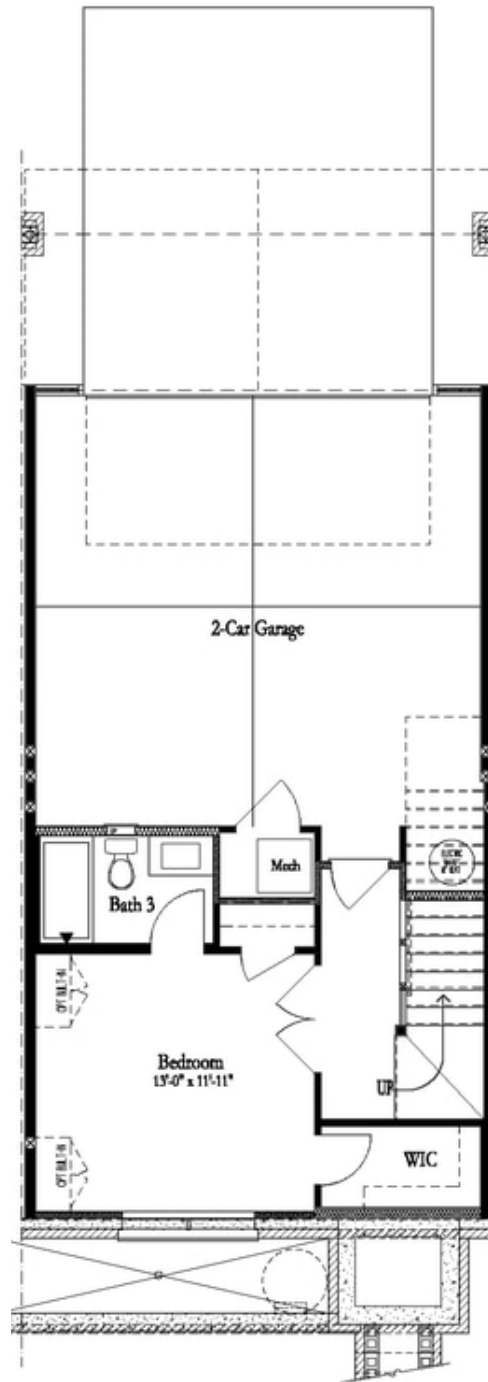
Gorgeous Graham- END UNIT - Classic farmhouse style townhome loaded with upgrades standard! Great new incentive: Receive \$10,000 towards closing costs/prepays when using one of our terrific preferred lenders and closing in December 2023!!! Offering luxurious sophisticated living where quality abounds in this stately 3-story beauty in a community of amazing architecture, meandering sidewalks & ample parking. Terrace level has convenient office or 3rd bedroom with full bath. Light-filled main level's has impressive designer kitchen outfitted w/beautiful 42" cabinets, oversized island with plenty of seating & quartz counters and is open to the spacious fireside family room. Just off the sunroom is easy access to the main level deck perfect for outdoor meals, coffee in the morning or glass of wine at night. The upper level features 2 bedrooms including the owners suite with fabulous en suite bath that has dual vanities, large shower and spacious walk-in closet. No carpeting anywhere....hard surface flooring throughout. Neutral paint colors throughout paired with crisp white trim & finishes every buyer craves. Expertly executed, this designer residence has enviable details on all 3 levels. Thoughtfully planned for today's lifestyle, enjoy the ease and convenience of luxury living within walking distance to Suwanee Town Center, ...

**Want to Know More
About This Home?**

CONTACT OUR COMMUNITY SALES MANAGER

NONE

Call Us @ (678) 332-7300

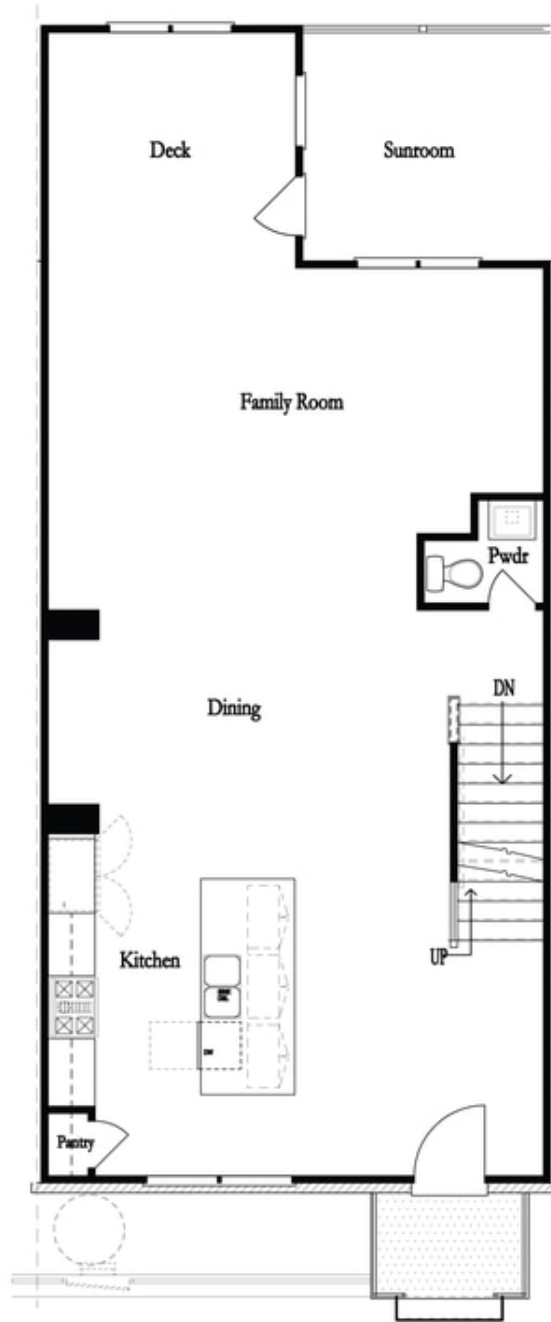


**Want to Know More
About This Home?**

CONTACT OUR COMMUNITY SALES MANAGER

NONE

Call Us @ (678) 332-7300

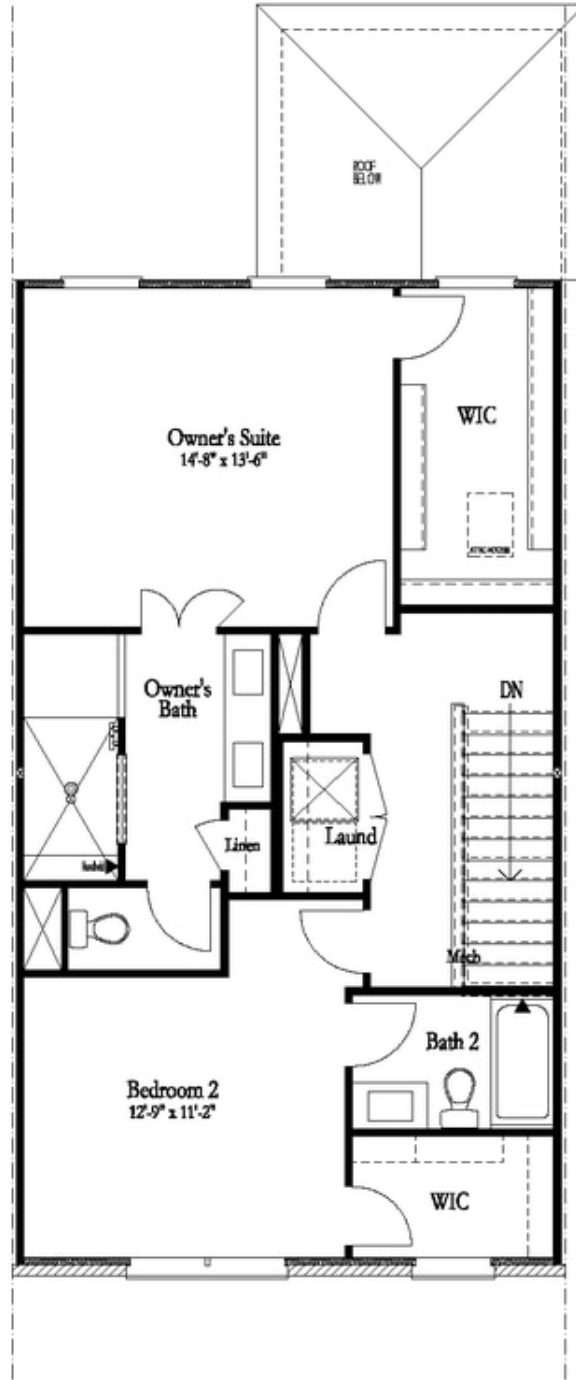


**Want to Know More
About This Home?**

CONTACT OUR COMMUNITY SALES MANAGER

NONE

Call Us @ (678) 332-7300



**Want to Know More
About This Home?**

CONTACT OUR COMMUNITY SALES MANAGER

NONE

Call Us @ (678) 332-7300