



PRICED FROM
\$555,150

 2,200 Sq Ft

 2 - 4 Beds

 2.5 - 3 Baths

 2 Car Garage

 3.0 Story

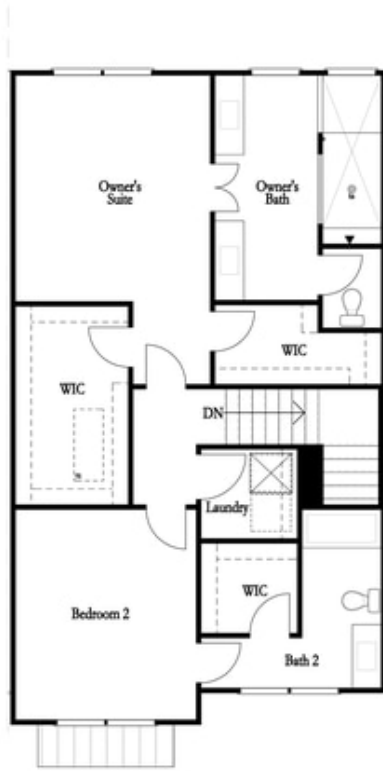
- Spacious Three Story Design with Open Main Level Layout
- Gourmet Kitchen with Island overlooking Dining and Family Room
- Owner's Suite and Private Bath with Dual Vanities and Over Size Walk-In Closet on Upper Level
- A Secondary Bedroom and Laundry on Upper Level
- Two Car Garage

[Read More Online](#)

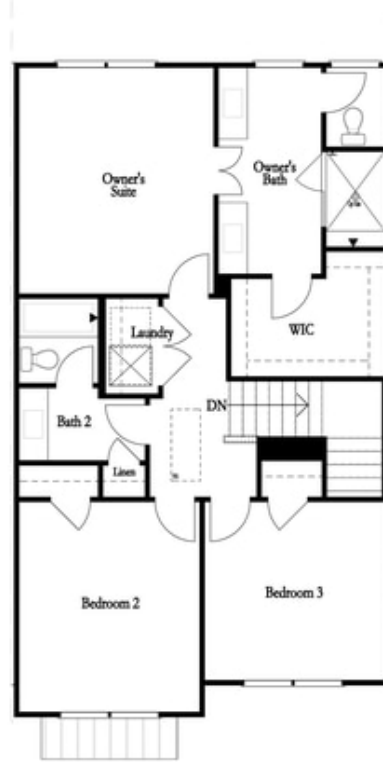
Available Elevations



Mallory - Front Elevation



2 Bedroom Option
 Mallory I



3 Bedroom Option
 Mallory II

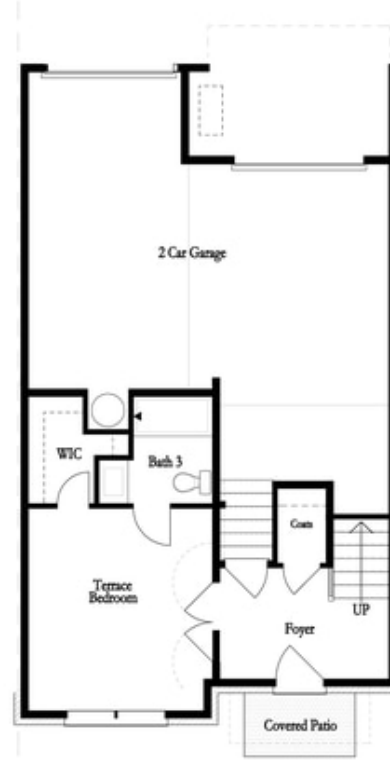
Third Floor

**Want to Know More
 About This Home?**

CONTACT OUR NEW HOME NAVIGATOR
 Call Us @ (678) 332-7300



Meida Room - Standard

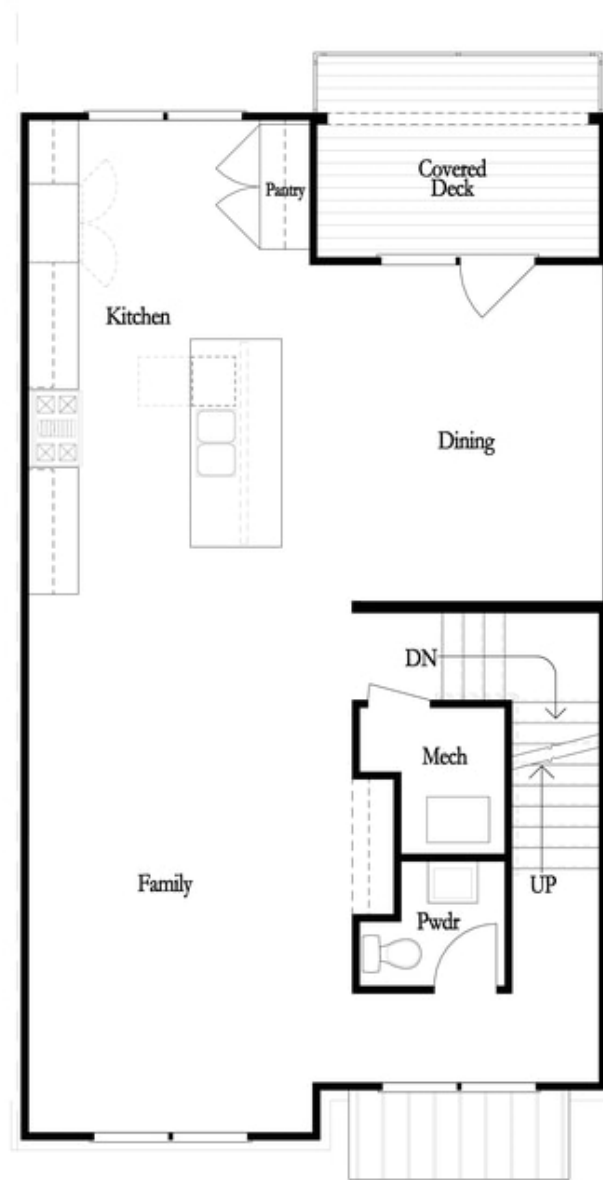


Optional Terrace Bedroom

First Floor

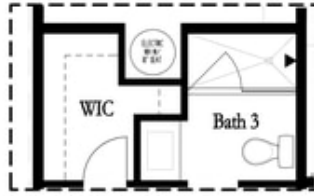
**Want to Know More
 About This Home?**

CONTACT OUR NEW HOME NAVIGATOR
 Call Us @ (678) 332-7300

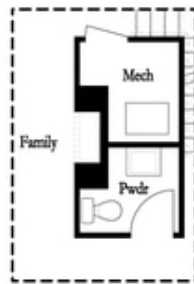


**Want to Know More
About This Home?**

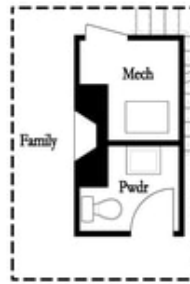
CONTACT OUR NEW HOME NAVIGATOR
Call Us @ (678) 332-7300



Optional Shower
First Floor

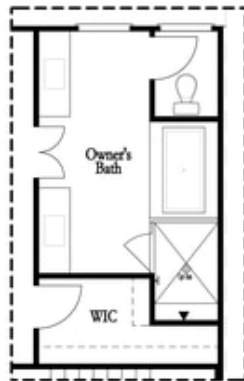


Optional Linear Fireplace



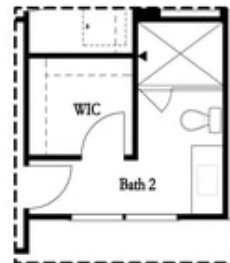
Optional Fireplace

Second Floor



Optional Tub/Shower Combo

Third Floor - 2 Bedroom Layout ONLY



Optional Shower Secondary Bath

Third Floor - 2 Bedroom Layout ONLY

**Want to Know More
 About This Home?**

CONTACT OUR NEW HOME NAVIGATOR
 Call Us @ (678) 332-7300