

PRICED AT
\$513,750

 1994 Sq Ft

 3 Beds

 3.5 Baths

 2 Car Garage

 3.0 Story

Last Garwood End Unit!! This is the one you've been waiting for!! Popular Garwood floor plan overlooking the private park Miroposa Park and Gazebo to be built for residents!! Location, Location Location!! This beautiful 3 story design floor offers entry on main level. 3bedroom, 3.5 bath Each bedroom has its onw private bathroom. Upgrades In this home Include: Linear Fireplace, Sunroom & Owner's bathroom has Tub shower. Design already selected- Linen Collection in this Design Package. Suwanee Townships is a gated community and amenity plan has a park, firepit and gazebo. This community is in highly desirable Suwanee and located within Level Creek Elementary & North Gwinnett High & Middle School district. Just a short 1.3mile drive to Suwanee Town Center, access to interstates, shopping and restaurants & Sims Lake Park. ** Home is under construction ** estimated completion October 2022* Pictures are of a previously built home and Not of Actual Home**

**Want to Know More
About This Home?**

CONTACT OUR COMMUNITY SALES MANAGER
Call Us @ 470.462.9178



FIRST FLOOR

Elevation J

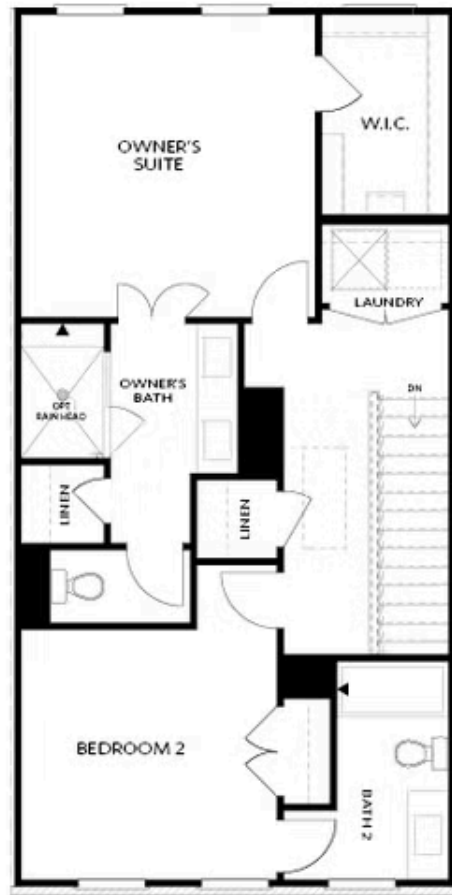
Want to Know More
About This Home?

CONTACT OUR COMMUNITY SALES MANAGER
Call Us @ 470.462.9178



Want to Know More
About This Home?

CONTACT OUR COMMUNITY SALES MANAGER
Call Us @ 470.462.9178

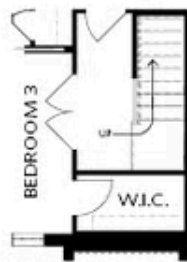


THIRD FLOOR

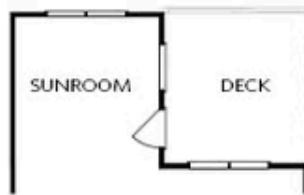
Elevation J

Want to Know More
About This Home?

CONTACT OUR COMMUNITY SALES MANAGER
Call Us @ 470.462.9178



OPT Double Doors
on Bedroom 3



OPT Sunroom ilo Full Deck



OPT Owner's
Walk-Through Shower



OPT Shower ilo
Tub/Shower Combo

FIRST FLOOR



OPT Fireplace



OPT Linear Fireplace

SECOND FLOOR



OPT Owner's Shower &
Tub Combo

THIRD FLOOR

OPTIONS

Want to Know More
About This Home?

CONTACT OUR COMMUNITY SALES MANAGER
Call Us @ 470.462.9178