








-  **4,234 Sq Ft**
-  **4 Beds**
-  **5 Baths**
-  **2 Car Garage**
-  **3.0 Story**

- **Basement Features a Recreation Room with Wet Bar, Media Room, Guest Suite with access to a Covered Patio, and an Unfinished Storage Room**
- **3-Story Elevator**
- **U-Shaped Switch Back Stair Case with Vertical 3-Story Open Middle**
- **Open Main Level - View from the Kitchen to the Dining Room to the Family Room**
- **Ample Windows for Plenty of Natural Light**
- **Oversized Kitchen Island**

[Read More Online](#)

## Available Elevations



Elevation A



Elevation B



Elevation C



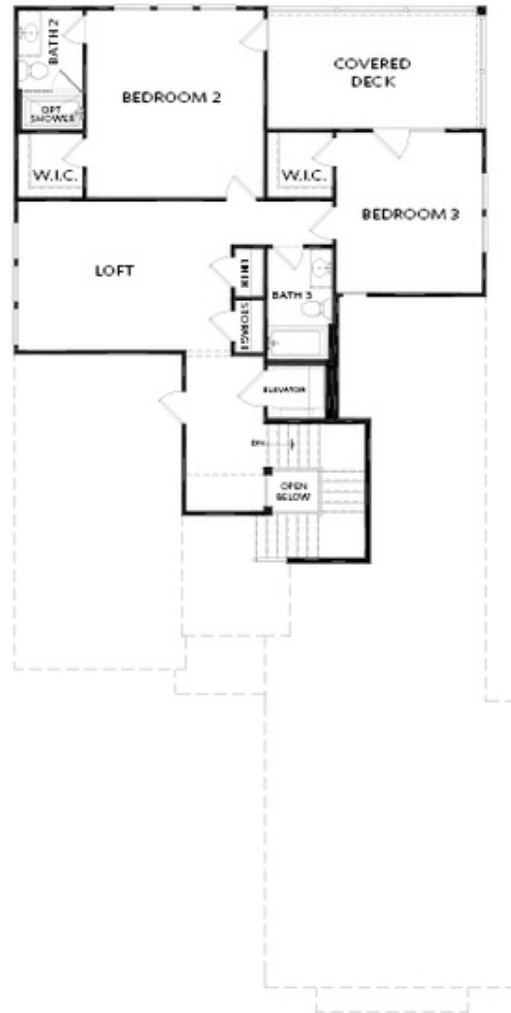
**BASEMENT**

Elevation A



FIRST FLOOR

Elevation A



SECOND FLOOR

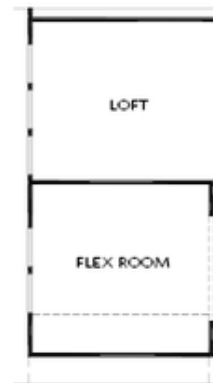
Elevation A

OPTIONS



OPT Slider Door  
at Covered Deck

FIRST FLOOR



OPT Flex Room

SECOND FLOOR