



 **2,552 Sq Ft**

 **3 - 4 Beds**

 **3.5 Baths**

 **2 Car Garage**

 **3.0 Story**

- **Media Room/Optional Bedroom with Private Access to a Covered Patio with Full Bathroom in the Basement**
- **Front Covered Porch Expands the Entire Width of the House on the First Floor - Bringing Ample Natural Light into the Family Room**
- **Optional Kitchen Location (Rear or Middle of the first floor)**
- **Open Concept - Views from the Kitchen, Dining Room and Family Room**
- **Large Covered Deck at the Rear of the First Floor**

[Read More Online](#)

## Available Elevations



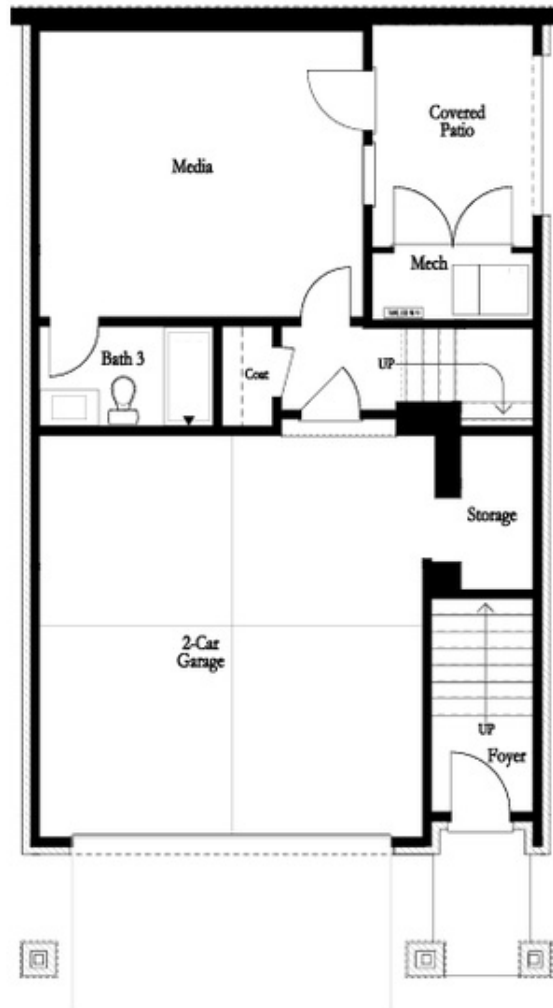
Elevation G



Elevation H

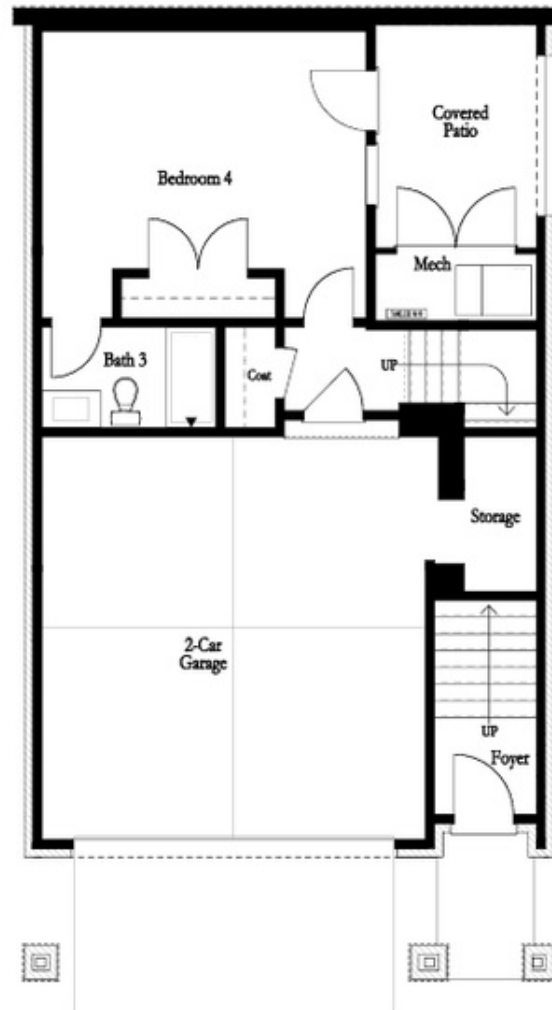


Elevation I



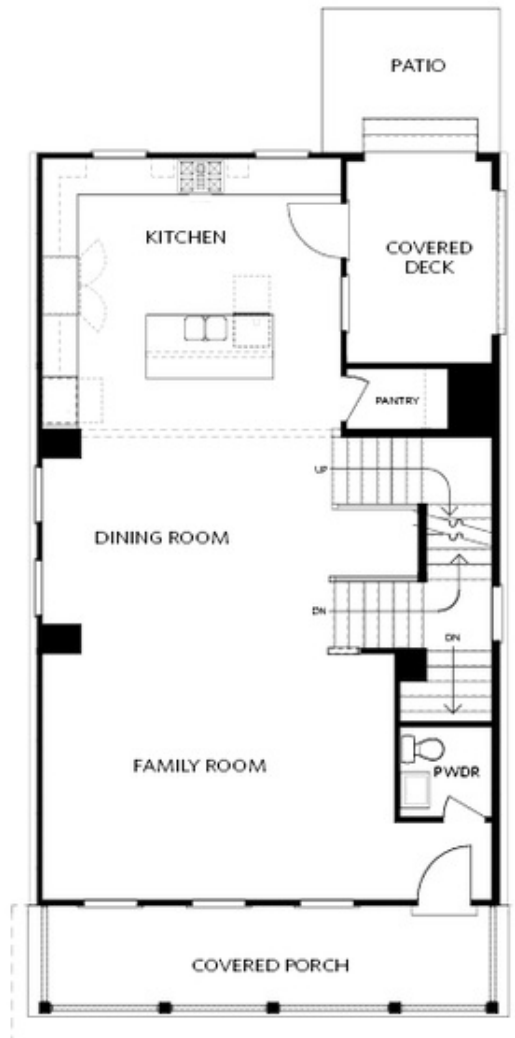
BASEMENT

Elevation G & H



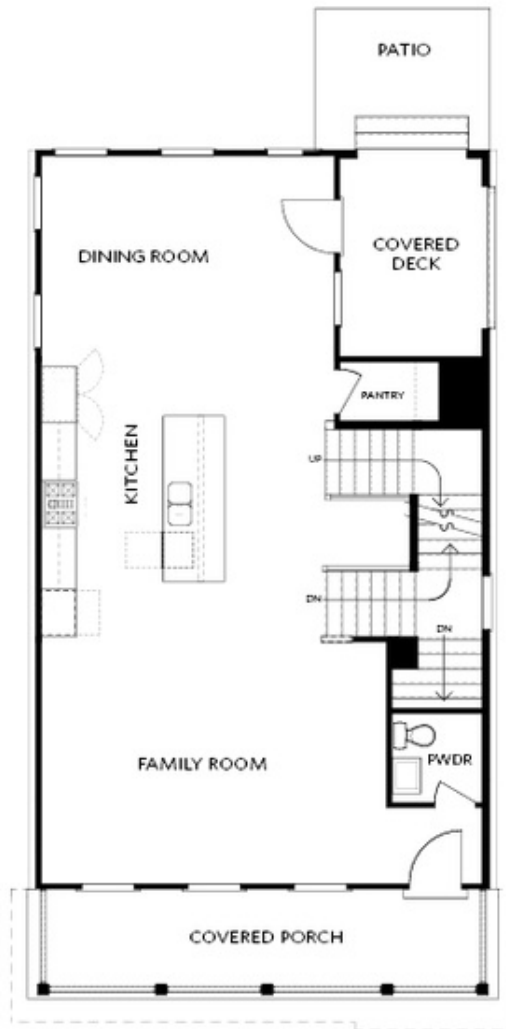
OPT Bedroom 4 ilo Media Room

**OPTIONAL BASEMENT**



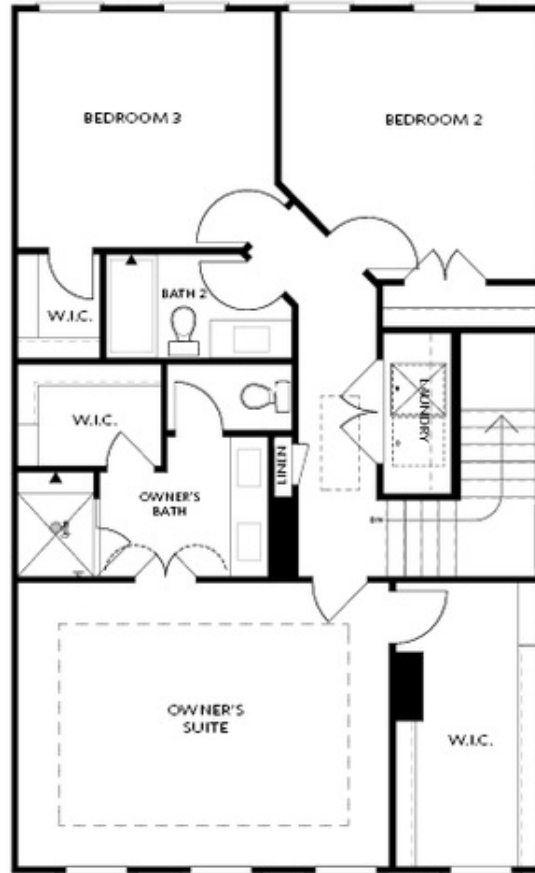
FIRST FLOOR  
KITCHEN REAR

Elevation G & H



FIRST FLOOR  
KITCHEN MIDDLE

Elevation G & H

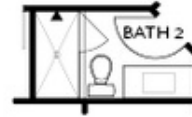


SECOND FLOOR

Elevation G & H



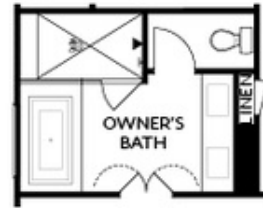
OPT Shower on Terrace Bath 3



OPT Shower Second Floor Bath 2



OPT Walk-In Shower



OPT Tub/Shower Combo



OPT linear Fireplace



OPT Fireplace

OPTIONS