







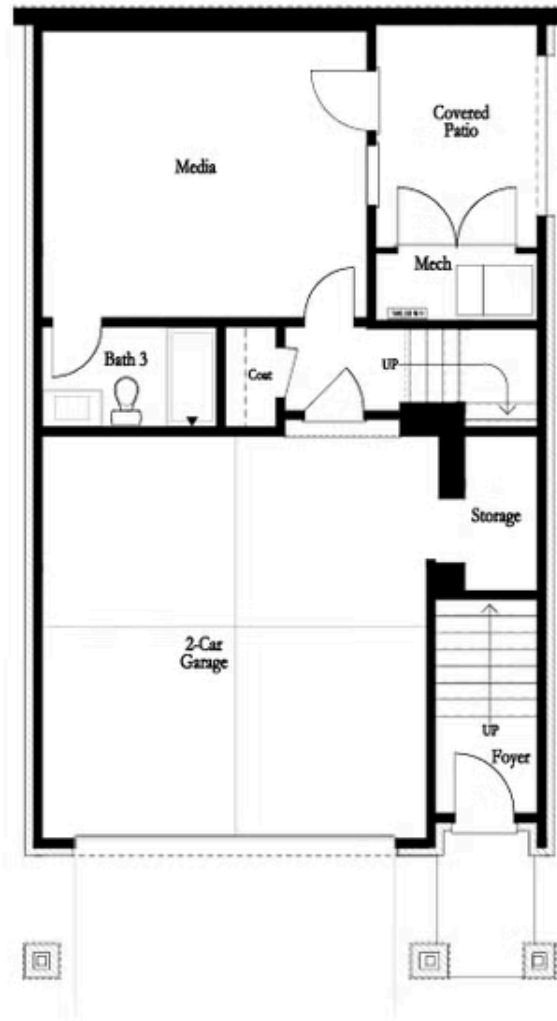
-  2,552 Sq Ft
-  3 - 4 Beds
-  3.5 Baths
-  2 Car Garage
-  3.0 Story

- Media Room/Optional Bedroom with Private Access to a Covered Patio with Full Bathroom in the Basement
- Front Covered Porch Expands the Entire Width of the House on the First Floor - Bringing Ample Natural Light into the Family Room
- Optional Kitchen Location (Rear or Middle of the first floor)
- Open Concept - Views from the Kitchen, Dining Room and Family Room
- Large Covered Deck at the Rear of the First Floor

[Read More Online](#)

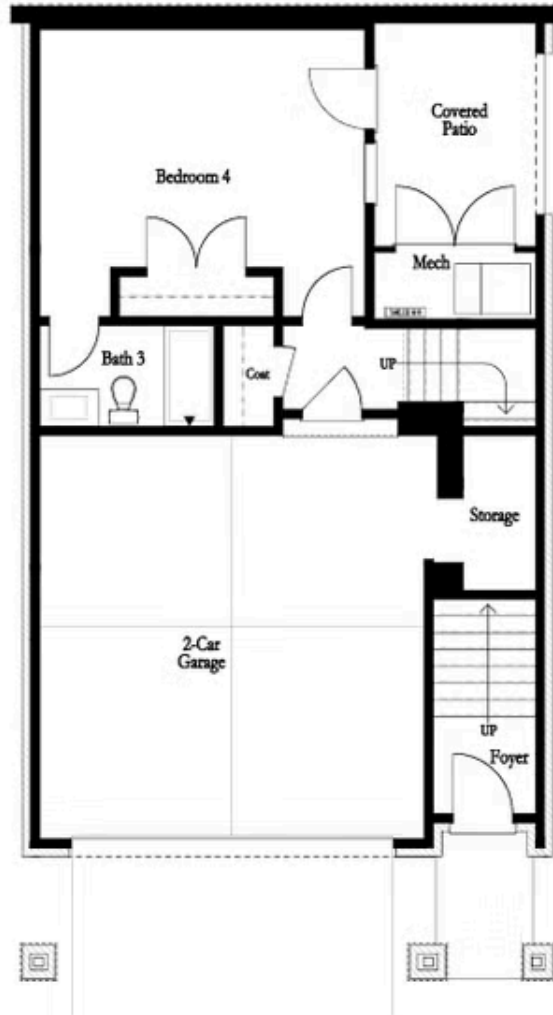
Available Elevations





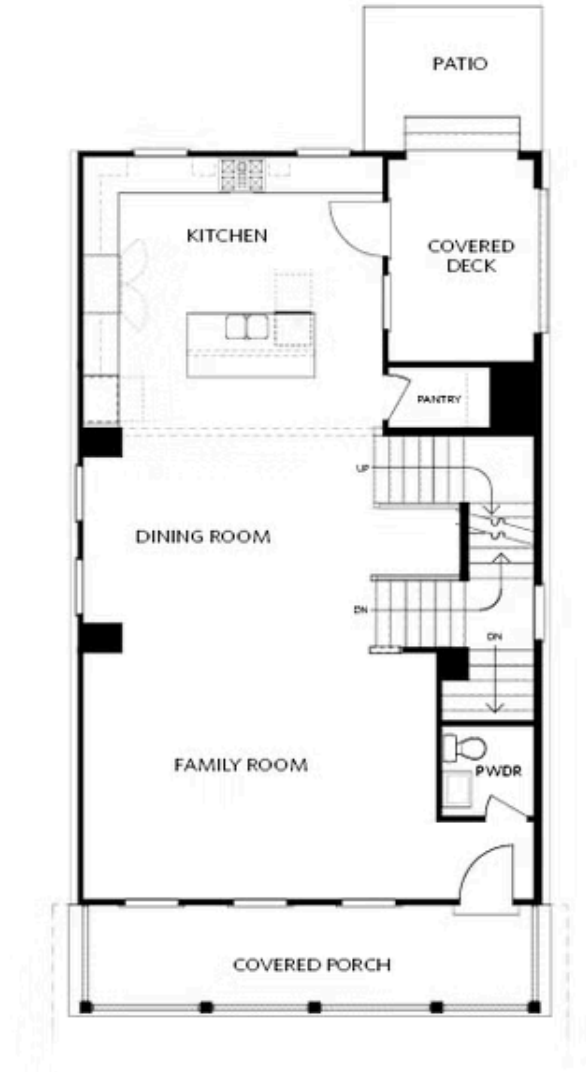
BASEMENT

Elevation G & H



OPT Bedroom 4 ilo Media Room

OPTIONAL BASEMENT



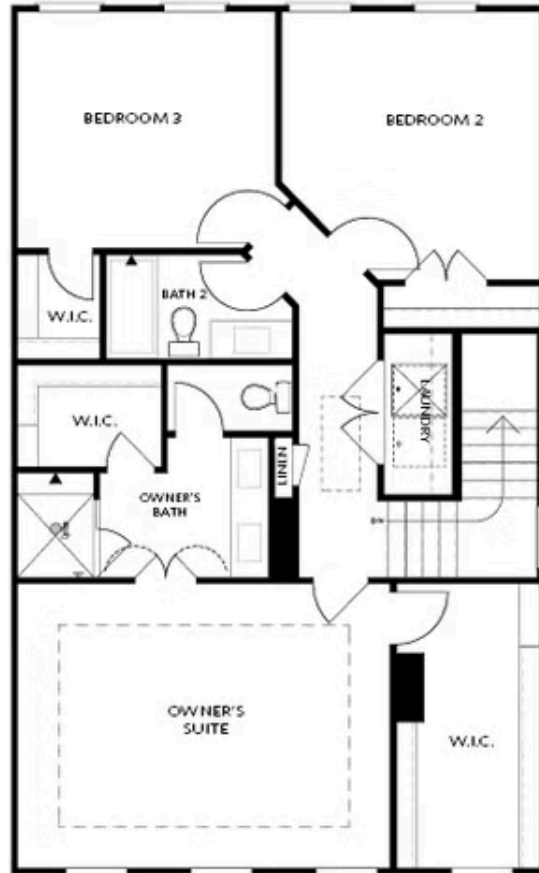
FIRST FLOOR
KITCHEN REAR

Elevation G & H



FIRST FLOOR
KITCHEN MIDDLE

Elevation G & H

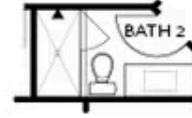


SECOND FLOOR

Elevation G & H



OPT Shower on Terrace Bath 3



OPT Shower Second Floor Bath 2



OPT linear Fireplace



OPT Fireplace



OPT Walk-In Shower



OPT Tub/Shower Combo

OPTIONS