



-  2,594 Sq Ft
-  3 - 4 Beds
-  2.5 Baths
-  2 - 3 Car Garage
-  3.0 Story

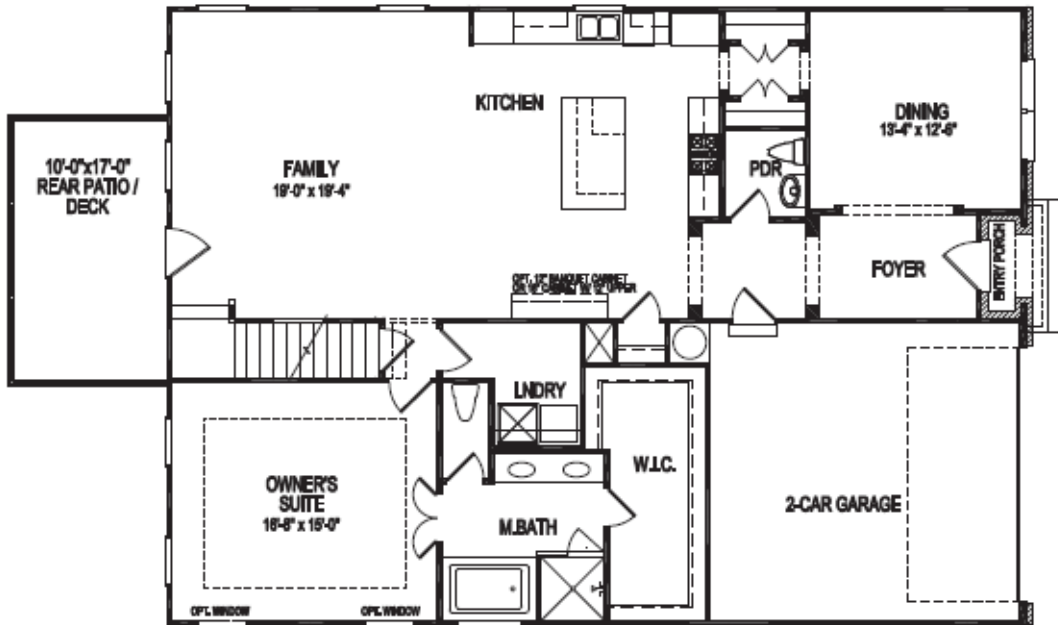
- Gourmet Kitchen with Island overlooking Dining and Family Room
- Owner's Suite and Private Bath with Dual Vanities and Over Size Walk-In Closet on Lower Level
- Secondary Bedrooms on Upper Level
- Three Car Garage

[Read More Online](#)

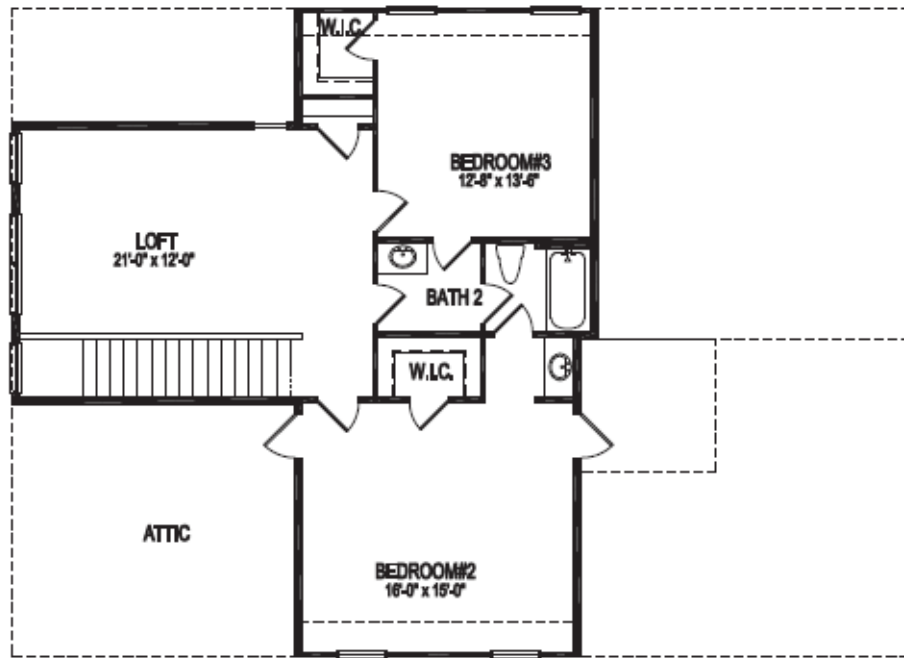
## Available Elevations



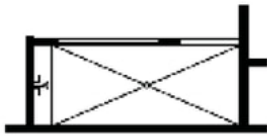
**HOMESTEAD COLLECTION**  
**THE MADILYN 3 CAR GARAGE**  
**SINGLE FAMILY IN 1 LOCATION**



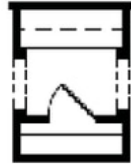
First Floor



Second Floor



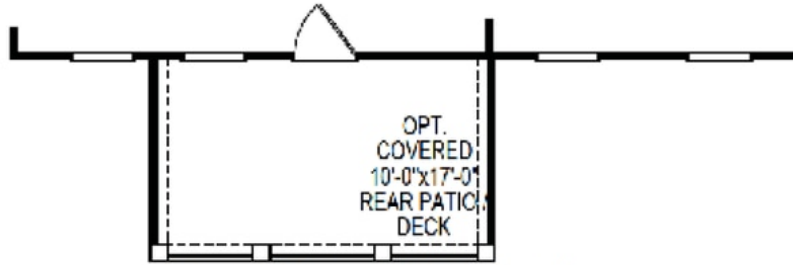
OPT. WALK-IN SHOWER



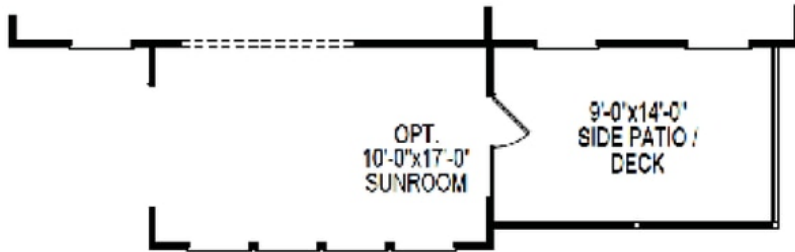
OPT. BUTLERS PANTRY



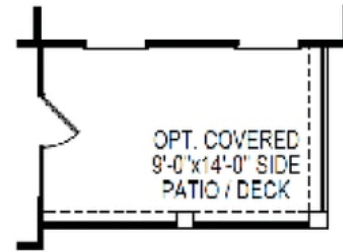
OPT. FIREPLACE



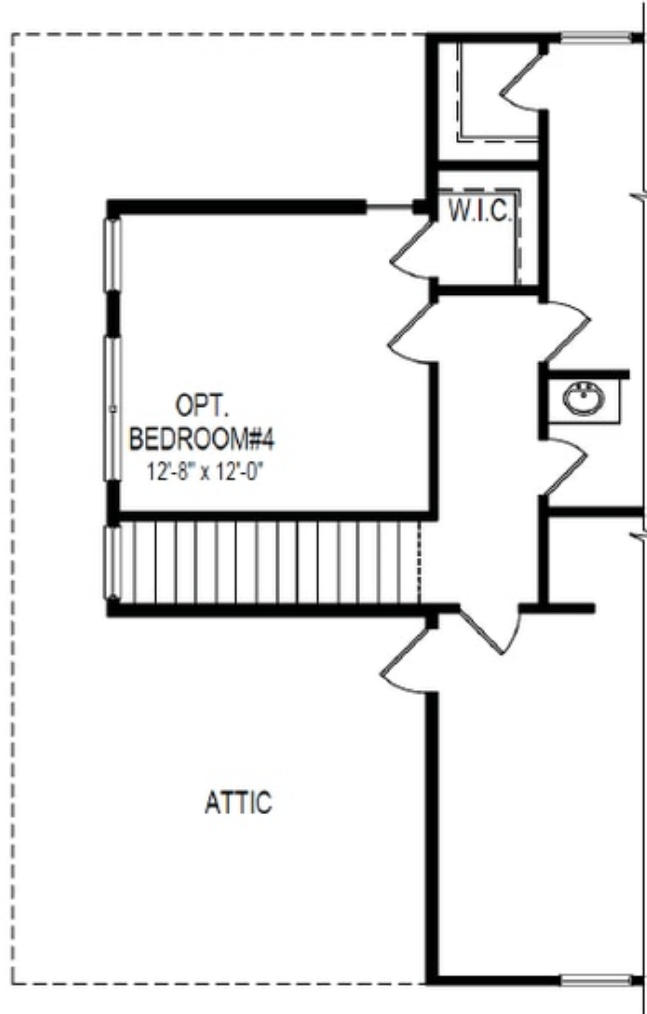
OPT. COVERED PATIO/DECK



OPT. SUNROOM



OPT. SUNROOM W/ COVERED PATIO/



OPT. BEDROOM 4