



 **3,615 - 4,545 Sq Ft**

 **5 - 8 Beds**

 **4.5 - 7 Baths**

 **3 Car Garage**

 **3.0 Story**

- **Guest Bedroom on Main Level with Private Full Bath**
- **Spacious Gourmet Kitchen with Island Overlooking Family Room, Breakfast Room and Outdoor Living**
- **Separate Study and Dining Room**
- **Secondary Bedrooms on Upper Level Offer Private or Shared Full Bath**
- **Optional Media Room**
- **Optional Covered Porch**

[Read More Online](#)

## Available Elevations



# The Murdock

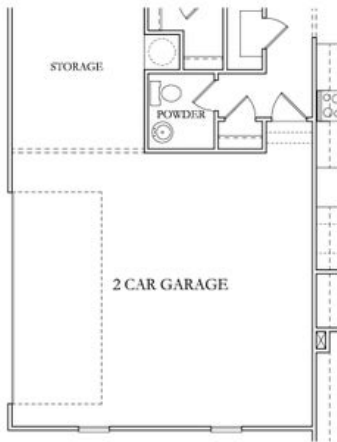


First Floor

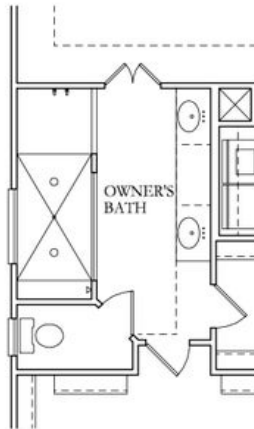


Second Floor

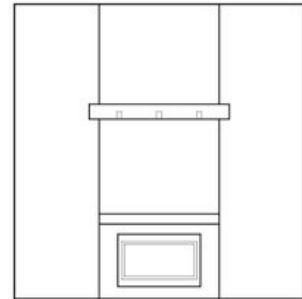
## The Murdock - Optional Layouts



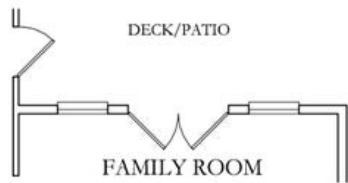
Optional Two Car Side  
 Entry Garage



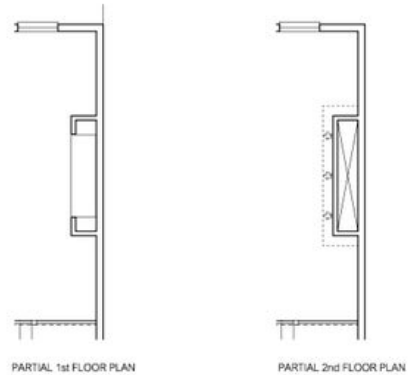
Optional Owner's Bath  
 Walk-In Shower



PARTIAL ELEVATION

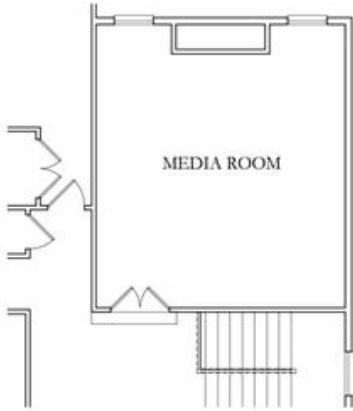


Optional French Doors to  
 Family Room

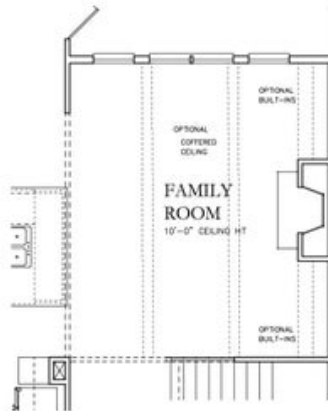


Optional 54" Linear Fireplace in  
 Family Room

## The Murdock - Optional Layouts



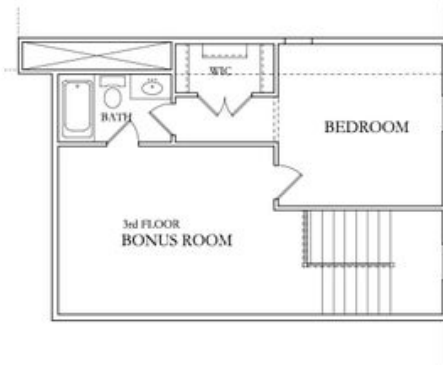
Optional Media Room  
 Above Family Room



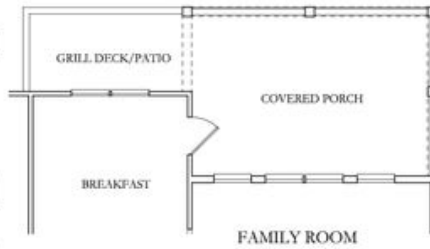
Family Room Layout When  
 Optional Media Room Selected



Optional 6th Bedroom and  
 Full Bath in Lieu of Study



Optional Third Level



Optional Covered Porch



Optional 7th Bedroom  
 and Full Bath